



**2015-2016
Yearbook**

SUNNY-ACRES TSB SILK EXCELLENT-94



SUNNY-ACRES TSB SILK

PUREBRED AYRSHIRE		08/20/09 FEMALE	
100579596 6-00 94		P9 +440	
NM\$	+79		
PTA	+2.92SCC	+0.4PL	-0.1DPR
PTA	-77M	+2F	+4P 50R
PTA\$	+79CY		8/15
PTA%		+0.3	+0.3
PTAT	+1.20T		60R 8/15
PPA	+952M	+83F	+37P
CLASS	ST6 SR6 BD7 DF6 RA3 RW8 LS5 FA5		
	FU7 UH8 UW8 UC5 UD5 TP5 TL4 LR8		
GOLD		%	FAT % PRT
2-03	2 305 21390 4.6	988 3.3	708
	308 21630 4.6	1002 3.3	716
3-04	2 305 28370 3.9	1100 3.1	877
	343 30570 3.9	1185 3.1	958
4-06	2 305 29950 4.0	1195 3.0	896
	365 32710 4.0	1309 3.0	995

 2ND 4-YEAR-OLD - 2013 MID-ATLANTIC NATIONAL
 1ST 4-YEAR-OLD - 2013 INTERNATIONAL
 SENIOR CHAMPION - 2013 INTERNATIONAL
 GRAND CHAMPION - 2013 INTERNATIONAL
 ALL-AMERICAN 4-YEAR-OLD - 2013
 2ND 5-YEAR-OLD - 2014 MID-ATLANTIC NATIONAL
 NOM ALL-AMERICAN 5-YEAR-OLD - 2014
 3RD AGED COW, 2015 MID-ATLANTIC NATIONAL

PALMYRA TRI-STAR BURDETTE-ET

100419568	
PTA	+2.80SCC +1.4PL +0.8DPR
PTA	+429M +14F +18P 98R
PTA%	-.01 +.02
PTAT	+1.80T 97R 8/15
D/AV	19799M 3.9 774F 3.2 628P 8.5T

SUNNY-ACRES WILTON'S SATIRE

100470020 2-04 82	
DHI	% FAT % PRT
2-02 2 300	13880 3.9 547 3.4 465

GRANDDAM: SUNNY-ACRES NOLAN'S SATIN

100390623 5-00 90	
GOLD	% FAT % PRT
1-11 2 305	18480 4.0 741 3.5 644
	348 20640 4.1 848 3.5 728
3-00 2 272	15000 3.9 583 3.7 556
4-05 2 336	23390 4.2 980 3.3 779
5-06 2 305	30020 4.5 1348 3.3 989
	365 32790 4.5 1491 3.4 1102
7-03 2 305	26180 3.6 936 3.3 872
	349 28970 3.6 1045 3.4 974
LIFE	1683 121110 4.1 4958 3.4 4152

Sunny Acres

DOUG & KATHE EVANS & FAMILY

1106 Davenport Rd., Georgetown, NY 13072

315.837.4777 • Andrew Cell 315.750.0719 • Gregory Cell 315.456.8283

sunnyacresayrshires@gmail.com

SUNNY-ACRES HARMONY'S SUGAR EXCELLENT-92



SUNNY-ACRES HARMONY'S SUGAR

PUREBRED AYRSHIRE 11/20/10 FEMALE
100604993 4-09 92 P- +396
NM\$ +98
PTA +2.79SCC +3.7PL +3.2DPR
PTA -516M -17F -11P 50R
PTA\$ +98CY 8/15
PTA%
PTAT +.60T +.03 55R 8/15
PPA +391M +7F +24P
CLASS ST6 SR5 BD7 DF7 RA3 RW7 LS5 FA4
FU7 UH7 UW5 UC6 UD5 TP6 TL3 LR7
GOLD % FAT % PRT
2-08 2 294 18790 4.3 807 3.3 617
3-07 2 305 24340 3.7 912 3.1 750
306 24410 3.7 914 3.1 752

1ST SR 3 - 2014 MID-ATLANTIC NATIONAL
3RD SR 3-YEAR-OLD - 2014 INTERNATIONAL
HM ALL-AMERICAN SR 3-YEAR-OLD - 2014
3RD 4-YEAR-OLD, 2015 MID-ATLANTIC NATIONAL

KELLCREST HARMONY-ET

10029042C
PTA +2.79SCC +1.6PL +2.9DPR
PTA -1178M -40F -36P 95R
PTA% +.04 +.01
PTAT +.40T 90R 8/15
D/AV 18078M 3.8 696F 3.1 562P 8.4T

SUNNY-ACRES TSB SPICY

100543049 6-03 94
GOLD % FAT % PRT
2-03 2 278 19890 4.3 852 3.2 639
3-02 2 305 25090 4.1 1041 3.3 830
322 25780 4.1 1066 3.3 854
4-04 2 305 29990 3.2 967 3.1 937
337 31100 3.2 1010 3.1 978
5-07 2 305 30640 4.0 1233 3.1 948
361 32390 4.0 1297 3.1 1012
LIFE 1298 109160 3.9 4225 3.2 3483

GRANDDAM: SUNNY-ACRES JJ SALTINE

100390575 6-01 90
GOLD % FAT % PRT
2-02 2 277 15760 4.1 643 3.3 513
3-02 2 305 20100 3.7 745 3.2 652
306 20140 3.7 746 3.2 654
5-08 2 305 24440 3.7 899 3.1 748
342 25650 3.7 954 3.1 795
6-09 2 305 23300 3.7 861 2.9 679
319 23660 3.7 877 2.9 693
7-11 2 268 20360 3.7 760 3.1 629
LIFE 1991 132610 3.8 5074 3.1 4168

Sunny Acres

DOUG & KATHE EVANS & FAMILY

4106 Davenport Rd., Georgetown, NY 13072

315.837.4777 • Andrew Cell 315.750.0719 • Gregory Cell 315.456.8283

sunnyacresayrshires@gmail.com

SUNNY-ACRES CA GINGER

EXCELLENT-91



SUNNY-ACRES CA GINGER

97.68% AYRSHIRE 06/04/12 FEMALE
100645545 97.68%
3-02 91 P8 +451

NM\$	+95		
PTA	+3.02SCC	+1.4PL	+0.8DPR
PTA	-62M	+0F	+8P 38R
PTA\$	+95CY		8/15
PTA%	+0.01	+0.05	
PTAT	+1.20T	41R 8/15	
PPA	-445M	-2F +22P	
CLASS	ST6 SR5 BD6 DF7 RA3 RW7 LS5 FA4		
	FU7 UH7 UW8 UC7 UD6 TP6 TL3 LR7		
GOLD		%	FAT % PRT
2-00	2 305 16740 4.2	696	3.4 566
	323 17320 4.2	722	3.4 588

1ST JR 2 - 2014 MID-ATLANTIC NATIONAL
RES INTERMEDIATE CHAMP - 2014 MID-ATLANTIC NATIONAL
NOM ALL-AMERICAN JR 2-YEAR-OLD - 2014
1ST 4-YEAR-OLD, 2015 MID-ATLANTIC NATIONAL
RES INT CHAMPION, 2015 MID-ATLANTIC NATIONAL

SUNNY-ACRES CLASS ACT

100579550 95.37%

PALMYRA RAMIUS S. GINGER

65002982	6-10	90					
GOLD		%	FAT	%	PRT		
1-10	2 305	19850	4.0	786	3.2	636	
	308	20020	4.0	792	3.2	641	
2-10	2 305	20600	4.1	841	3.3	687	
	365	23311	4.1	951	3.3	779	
4-02	2 305	24540	3.9	957	3.1	761	
	365	27263	4.0	1080	3.2	867	
LIFE	1742	108200	4.1	4395	3.2	3418	

1ST FALL YRLG IN MILK - 2007 CENTRAL NATIONAL
ALL-AMERICAN FALL YEARLING IN MILK - 2007

GRANDDAM: PALMYRA SATELLITE L GINGER

100164712	4-10	86					
GOLD		%	FAT	%	PRT		
2-00	2 303	20350	3.8	771	3.1	636	
2-11	2 303	15310	3.5	543	3.0	464	
3-11	2 365	20860	3.9	804	3.1	648	
5-01	2 299	23620	3.6	844	3.0	715	
6-00	2 298	25100	3.1	789	2.9	731	
LIFE	1569	105260	3.6	3752	3.0	3195	

NOM JR ALL-AMERICAN SR HEIFER CALF - 2001
2ND MILKING SR YRLG-2002 MID-ATLANTIC NAT'L
2ND MILKING SR YRLG-2002 MID-ATLANTIC NAT'L JR
1ST MILKING SR YRLG-2002 SOUTHERN NAT'L
1ST MILKING SR YRLG-2002 SOUTHERN NAT'L JR
RES ALL-AMERICAN MILKING SENIOR YRLG - 2002
JR ALL-AMERICAN MILKING SR YEARLING - 2002

Sunny Acres

DOUG & KATHE EVANS & FAMILY

4106 Davenport Rd., Georgetown, NY 13072

315.837.4777 • Andrew Cell 315.750.0719 • Gregory Cell 315.456.8283

sunnyacresayrshires@gmail.com

SUNNY-ACRES LL KYLIE

EXCELLENT-91



SUNNY-ACRES LL KYLIE

PUREBRED AYRSHIRE		07/07/11 FEMALE	
100619100	4-01 91	P8 +443	
NM\$	+82		
PTA	+3.00SCC	+1.2PL	-0.1DPR
PTA	+877M	-3F	+10P 48R
PTA\$	+82CY	8/15	
PTA%			
PTAT	+1.10T		54R 8/15
PPA	+3516M	+1F	+58P
CLASS	ST5 SR4 BD6 DF7 RAI RW7 LS5 FA4		
	FU6 UH7 UW6 UC7 UD5 TP7 TL3 LR7		
GOLD		%	FAT % PRT
2-00	2 305 20970	3.4	722 3.0 619
	313 21450	3.4	739 3.0 634
3-00	2 305 29000	3.3	961 2.8 810
	365 34251	3.3	1139 2.8 973

GRANDDAM:

SUNNY-ACRES BRENDAN'S KINETA

100283769	4-11 85		
GOLD		%	FAT % PRT
2-02	2 305 19310	3.5	674 3.0 571
	365 22380	3.5	773 3.0 668
3-08	2 305 23240	3.6	846 3.3 767
	334 24180	3.7	893 3.3 808
4-09	2 296 19360	3.0	573 3.3 641
5-08	2 209 14770	3.6	535 3.2 471

LIBBY'S LOCHINVAR

100543021			
PTA	+2.98SCC	+0.1PL	+0.1DPR
PTA	+937M	+6F	+16P 90R
PTA%		-1.6	-0.7
PTAT	+1.60T		82R 8/15
D/AV	20017M 3.7	744F 3.0	608P 8.5T

SUNNY-ACRES MASTER KENDRA

100536296	7-05 93	3E	
GOLD		%	FAT % PRT
2-02	2 305 19970	3.5	697 3.0 598
	328 21270	3.5	741 3.0 641
3-03	2 289 22290	3.6	795 3.0 672
4-03	2 305 27430	3.9	1076 3.0 824
	307 27530	3.9	1081 3.0 828
5-02	2 305 27520	4.3	1191 3.0 836
	330 28890	4.3	1250 3.1 884
6-03	2 305 28210	3.7	1046 3.0 839
	365 31540	3.7	1182 3.0 954
LIFE	1619 131520	3.8	5049 3.0 3979

3RD SPRING CALF - 2008 MID-ATLANTIC NATIONAL

3RD JR 3-YEAR-OLD - 2011 MID-ATLANTIC NAT'L

2ND 4-YEAR-OLD - 2012 MID-ATLANTIC NATIONAL

3RD 5-YEAR-OLD - 2013 MID-ATLANTIC NATIONAL

Sunny Acres

DOUG & KATHE EVANS & FAMILY

4106 Davenport Rd., Georgetown, NY 13072

315.837.4777 • Andrew Cell 315.750.0719 • Gregory Cell 315.456.8283

sunnyacresayrshires@gmail.com

SUNNY-ACRES RIGGINS RAMONA

EXCELLENT-93



SUNNY-ACRES RIGGINS RAMONA

92.59% AYRSHIRE 08/12/11 FEMALE
 100628085 92.59%
 4-00 93 P- +383
 NM\$ -96
 PTA +3.22SCC -0.6PL -0.2DPR
 PTA -176M -4F -10P 47R
 PTA\$ -96CY +.01 -.03 8/15
 PTA%
 PTAT +.30T 53R 8/15
 PPA -1880M -56F -60P
 CLASS ST6 SR5 BD7 DF6 RA4 RW8 LS5 FA5
 FU6 UH7 UW6 UC9 UD5 TP7 TL2 LR8
 GOLD % FAT % PRT
 2-01 2 305 17170 4.2 720 3.1 537
 314 17560 4.2 740 3.1 549
 3-01 2 303 19560 4.0 783 3.2 617

2ND 4-YEAR-OLD, 2015 MID-ATLANTIC NATIONAL

PALMYRA POKER RIGGINS-ET

65459499
 PTA +3.40SCC -0.3DPR
 PTA +187M +22F +7P 94R
 PTA% +.08
 PTAT +.30T 87R 8/15
 D/AV 19042M 4.0 757F 3.1 596P 8.4T

SUNNY-ACRES JACKSON'S RUDEAN

100579541 85.19%
 2-08 85
 GOLD % FAT % PRT
 2-03 2 305 17750 3.5 628 3.0 535
 337 18690 3.5 657 3.0 568

GRANDDAM: SUNNY-ACRES CC RENEE

100390593 9-05 93 3E
 GOLD % FAT % PRT
 2-02 2 305 20180 3.5 715 3.0 598
 321 20930 3.6 744 3.0 623
 3-02 3 305 25590 3.6 912 2.9 752
 5-10 2 305 30520 4.0 1229 3.0 907
 313 31050 4.0 1247 3.0 923
 6-10 2 305 30070 3.5 1044 3.0 905
 8-10 2 305 31370 3.3 1040 2.7 845
 365 36640 3.3 1219 2.7 990
 LIFE 2625 211880 3.6 7700 3.0 6274

Sunny-Acres

DOUG & KATHE EVANS & FAMILY

4106 Davenport Rd., Georgetown, NY 13072

315.837.4777 • Andrew Cell 315.750.0719 • Gregory Cell 315.456.8283

sunnyacresayrshires@gmail.com

NV-ARROWHEAD PLMBTM ARABELLA

EXCELLENT-90



NV-ARROWHEAD PLMBTM ARABELLA

PUREBRED AYRSHIRE 09/10/09 FEMALE
 100642001 4-09 90 P- +371
 NM\$ -71
 PTA +3.05SCC +1.1PL +0.8DPR
 PTA -563M -21F -13P 44R
 PTA\$ -71CY 8/15
 PTA% +.03
 PTAT +.30T 49R 8/15
 PPA -559M -32F -8P

CLASS	ST8	SR3	BD8	DF6	RA3	RW5	LS6	FA7
	FU7	UH6	UW5	UC6	UD6	TP5	TL3	LR7
DHI			%			FAT	%	PRT
3-00	2	302	10750	3.8	413	3.3	353	
4-06	2	305	17091	3.8	643	3.1	536	
		311	17265	3.8	650	3.1	542	

YEARLING DAUGHTER:
 PLUM-BOTTOM DREW'S AVRIL BEING BRED

SAGUENAYENNE KATE MEDALIST-ET

10027041C
 PTA +3.06SCC +3.0PL +0.1DPR
 PTA -502M -26F -16P 92R
 PTA% -.04
 PTAT +.60T 83R 8/15
 D/AV 18503M 3.8 702F 3.1 581P 8.5T

ARROWHEAD-PLM BTM BBBK APACHE

100364550 3-11 87

GRANDDAM: PLUM-BOTTOM SAILOR ALICE

1016134 6-02 93 2E
 GOLD % FAT % PRT
 3-07 2 289 14780 3.8 559 3.3 494
 4-07 2 293 14520 3.7 541 3.5 510

NOM ALL-AMERICAN AGED COW - 2001

Plum Bottom Ayrshires

AUDREY GAY RODGERS

6364 SR 655, Belleville, PA 17004

(717) 677-3731 • www.hameaufarm.com

hameau@embarqmail.com

GREENCREST MICHELE

EXCELLENT-92 5E



GREENCREST MICHELE

PUREBRED AYRSHIRE 03/25/02 FEMALE
 100254983 11-01 92 5E P9
 +409
 NM\$ -2
 PTA +2.99SCC -0.5PL +1.7DPR
 PTA -210M +0F -3P 50R
 PTA\$ -2CY 8/15
 PTA%
 PTAT +.30T 8/15
 PPA +3079M +148F +108P
 CLASS ST8 SR9 BD9 DF8 RA5 RW6 LS6 FA4
 FU9 UH8 UW8 UC7 UD6 TP5 TL5 LR4
 GOLD % FAT % PRT
 1-11 2 304 17650 4.3 766 3.3 588
 2-11 2 305 23740 4.6 1083 3.3 785
 311 23890 4.6 1092 3.3 793
 4-01 2 305 22760 3.9 887 3.2 733
 365 25630 4.1 1051 3.2 830
 5-05 2 305 19900 4.0 793 3.2 638
 335 20810 4.0 836 3.2 670
 6-06 2 305 15690 4.2 666 3.5 547
 310 15870 4.2 673 3.5 553
 7-06 2 267 17870 3.7 653 3.2 567
 8-05 2 305 14770 4.0 592 3.4 500
 318 14980 4.0 602 3.4 508
 9-06 2 305 19430 3.4 651 2.9 572
 333 20010 3.4 685 3.0 595
 10-07 2 297 10750 4.0 432 3.4 363
 11-09 2 305 24530 3.6 891 3.2 795
 365 28360 3.8 1064 3.4 966
 LIFE 3231 197020 4.0 7918 3.3 6470

HARLEQUIN COLOMBO

818266C
 PTA +3.43SCC -4.1PL +1.3DPR
 PTA -147M -1F -7P 86R
 PTA% +.02 -.01
 PTAT -.60T 8/15
 D/AV 0M 8.5T

DES FLOTS BLEUS BBG JALOUSIE

10309438C

GRANDDAM: DES FLOTS BLEUS TED FERRARI

10006328C

NEXT DAM: DES FLOTS BLEUS DIXIE

EX-90 3E CAN

MICHELE DAUGHTERS:

GATTON SWEDMARK MISSLE, EX-91
 GATTON TRAVELER MICAH, EX-92 3E

GREENCREST MICHELE IS PICTURED ABOVE
 AT 12-02 ON HER 10TH LACTATION!

1ST JR 2-YEAR-OLD - 2004 SOUTHERN NAT'L JR
 HM JR ALL-AMERICAN JR 2-YEAR-OLD - 2004

Still Dreamn Dairy
JESSICA GATTON-DIXON & BRETT DIXON
 PO Box 39, Conway MO 65632
 Phone: (417-844-7217)
 E-mail: stilldreamndairy@hotmail.com

RIGHT-ANGLE T HARLEY

EXCELLENT-94 4E



RIGHT-ANGLE T HARLEY

PUREBRED AYRSHIRE 03/12/04 FEMALE
 100364699 9-05 94 4E P- +369
 NM\$ -149
 PTA +3.14SCC -1.4PPL +1.0DPR
 PTA -199M -24F -10P 56R
 PTA\$ -149CY 8/15
 PTA%
 PTAT +.40T 49R 8/15
 PPA -1109M -79F -32P
 CLASS ST9 SR8 BD9 DF8 RA5 RW9 LS6 FA7
 FU6 UH9 UW9 UC7 UD6 TP7 TL7 LR8
 DHI % FAT % PRT
 2-00 2 281 14290 3.7 526 3.3 465
 2-11 2 346 18410 3.4 624 3.3 605
 4-02 2 305 15321 3.9 599 4.0 610
 5-06 2 354 23429 3.6 850 3.3 766
 7-02 3 305 21310 3.3 711 3.4 719
 8-03 3 317 23600 3.3 773 2.7 641
 9-04 3 285 20690 4.3 894 3.5 719
 LIFE 2346 139959 3.6 4977 3.2 4525

PHOTO AT 11-06, 8TH LACTATION!

HARLEY'S CLASSIFIED DAUGHTERS:

HANNAH: EX-93 @ 5-03, OVER 37,000M,
 RANKED #118 ON 8/15 ELITE CPI LIST
 HEIDI: VG-88 @ 5-02
 BURDETTE HARLEY: EX-90 @ 4-05
 DBLWHMY HARLEY EX-91 @ 3-02

HARLEY IS THE BASE OF OUR BREEDING PROGRAM. HER DAUGHTERS, GRANDDAUGHTERS AND GREAT-GRANDDAUGHTERS EXCEL IN THE SHOW STRING AND IN THE PARLOR. IT HAS BEEN AN HONOR TO OWN HER WITH OUR GOOD FRIENDS, DAVE & KAREN KOSS.

RIGHT ANGLE BBBK TRAVELER

100226069
 PTA +3.17SCC -1.8PL +0.2DPR
 PTA -340M -25F -13P 74R
 PTA% -.06 -.01
 PTAT +.30T 60R 8/15
 D/AV 18681M 3.9 721F 3.2 593P 8.7T

EXSELL EVOLUTION HYACINTHE

100207646 4-06 88
 3-07 3 304 23720 4.0 957 3.0 721
 4-06 2 305 17710 4.3 764 3.2 575
 5-09 3 279 13600 4.2 573 2.9 394

HARLEY SHOW RESULTS:

NOM ALL-AMERICAN SPRING CALF - 2004
 NOM ALL-AMERICAN SPRING YEARLING - 2005
 RES JR ALL-AMERICAN SPRING YEARLING - 2005
 NOM ALL-AMERICAN JR 2-YEAR-OLD - 2006
 RES JR ALL-AMERICAN JR 2-YEAR-OLD - 2006
 RES ALL-AMERICAN 4-YEAR-OLD - 2008
 RES SR CHAMPION - 2009 SOUTHERN NATIONAL
 RES GRAND CHAMPION - 2009 SOUTHERN NATIONAL
 RES ALL-AMERICAN 5-YEAR-OLD - 2009
 HM ALL-AMERICAN AGED COW - 2011
 RES ALL-AMERICAN AGED COW - 2012
 ALL WORLD 8-YEAR-OLD AND OVER - 2012
 RES ALL-AMERICAN 100,000 LB COW - 2013
 ALL WORLD 8-YEAR-OLD AND OVER - 2013

Ski-Pal Ayrshires

DAVE KOSS
 Epworth, IA
 (563) 543-0440
 skipalayr@aol.com

Narrabee Cows LLC

DANE LANG
 Brooklyn, IA
 (641) 990-5096
 dane.m.lang@gmail.com

GOOD-VUE DREAM VANESSA

VERY GOOD-87



GOOD-VUE DREAM VANESSA

94.9% AYRSHIRE 06/22/12 FEMALE
 840003009378964 94.9%
 2-05 87 P7 +442

NM\$ -17
 PTA +3.07SCC -1.7PL -1.5DPR
 PTA +110M +14F +2P 45R
 PTA\$ -17CY 8/15
 PTA% +.05 -.01
 PTAT +1.20T 43R 8/15
 PPA +746M +37F +16P
 CLASS ST6 SR4 BD5 DF6 RA4 RW6 LS6 FA4
 FU7 UH7 UW6 UC6 UD7 TP6 TL2 LR7
 GOLD % FAT % PRT
 1-11 2 305 16680 3.7 620 3.1 513
 365 19460 3.7 729 3.1 604

 NOM JR ALL-AMERICAN SUMMER YEARLING - 2013
 3RD JR 2-YEAR-OLD - 2014 INTERNATIONAL
 1ST JR 2-YEAR-OLD - 2014 CENTRAL NATIONAL JR
 HM ALL-AMERICAN JR 2-YEAR-OLD (TIE) - 2014
 JR ALL-AMERICAN JR 2-YEAR-OLD - 2014

NEXUS DREAMER

103734662C 89.81%
 PTA +3.03SCC -3.0PL -1.6DPR
 PTA +269M +21F +9P 91R
 PTA% +.06
 PTAT +.70T 82R 8/15
 D/AV 21696M 4.0 874F 3.2 689P 8.5T

GOOD-VUE POKERS VENICE

840003000764029 7-03 88
 GOLD % FAT % PRT
 2-00 2 305 11333 4.1 463 3.2 364
 365 13143 4.2 546 3.3 428
 3-02 263 12407 3.9 481 3.3 414
 4-01 2 305 17980 4.1 736 3.4 614
 361 20970 4.1 853 3.4 718
 365 21150 4.1 859 3.4 724
 5-06 2 305 22000 3.7 815 3.2 705
 365 24670 3.8 946 3.3 805

 3RD JR 3-YEAR-OLD - 2011 CENTRAL NATIONAL JR
 NOM JR ALL-AMERICAN JR 3-YEAR-OLD - 2011

GRANDDAM: GOOD-VUE RAMIUS VENUS

100352663 5-04 89
 GOLD % FAT % PRT
 2-04 2 302 11860 3.9 466 3.5 413
 3-04 2 283 12550 4.1 512 3.4 432
 4-03 2 283 14150 3.8 540 3.5 489
 5-04 2 305 15080 3.9 592 3.4 510
 308 15150 3.9 595 3.4 513

Good-Vue Ayr Farms

MICHAEL & LINDA HANSON, DAVID, MATTHEW & STEVEN

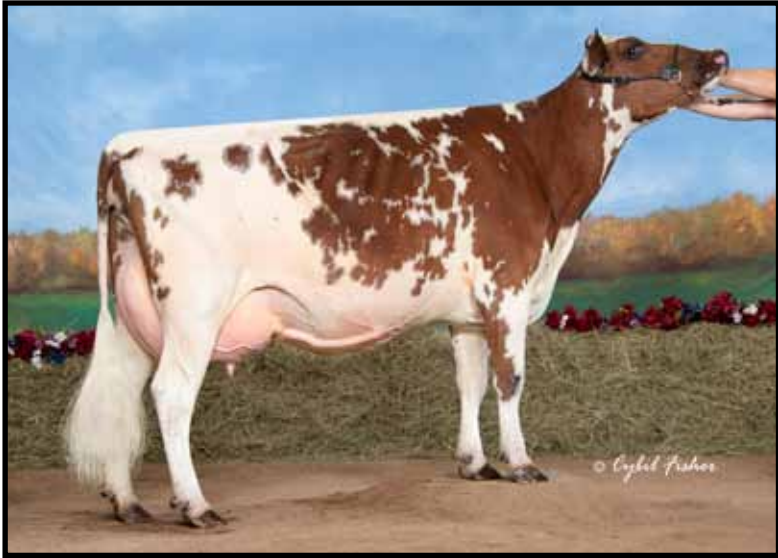
35400 St. Hwy 1 NE, Goodridge, MN 56725

(218) 378-4588

miliha@gvtel.com

GOOD-VUE POKERS ROXI

EXCELLENT-90 2E



GOOD-VUE POKERS ROXI

PUREBRED AYRSHIRE 07/26/09 FEMALE
840003000764066
6-00 90 2E P9 +441

NM\$	+33								
PTA	+2.86SCC	-1.2PL	-1.7DPR						
PTA	+315M	+16F	+5P	58R					
PTA\$	+33CY			8/15					
PTA%		+0.2	-.03						
PTAT	+.80T		57R	8/15					
PPA	+1782M	+82F	+39P						
CLASS	ST5	SR4	BD5	DF5	RA3	RW6	LS5	FA6	
	FU5	UH6	UW6	UC6	UD6	TP6	TL3	LR7	
GOLD				%	FAT	%	PRT		
2-00	2	305	14650	3.7	544	3.1	460		
		365	17292	3.7	639	3.2	553		
3-07	2	305	22330	3.5	784	3.0	666		
		331	23080	3.5	812	3.0	695		
4-11	2	305	24000	3.7	890	3.1	736		
		365	26420	3.7	968	3.1	818		

1ST SUMMER YEARLING - 2010 CENTRAL NAT'L JR
RES JR ALL-AMERICAN SUMMER YEARLING - 2010
3RD JR 2-YEAR-OLD - 2011 CENTRAL NATIONAL JR
1ST 4-YEAR-OLD - 2013 CENTRAL NATIONAL JR
RES JR ALL-AMERICAN 4-YEAR-OLD - 2013
3RD 5-YEAR-OLD - 2014 CENTRAL NATIONAL JR
NOM JR ALL-AMERICAN 5-YEAR-OLD - 2014

DREAMER EMBRYOS AVAILABLE

DES CHAMOIS POKER-ET

8401621C
PTA +2.84SCC +0.7PL -2.1DPR
PTA +109M +17F +4P 98R
PTA% +.07
PTAT +.30T 97R 8/15
D/AV 19402M 4.0 769F 3.1 610P 8.4T

GOOD-VUE LORENZOS REDRESS

100295526	4-04	88							
GOLD			%	FAT	%	PRT			
2-03	2	305	16050	3.8	610	2.9	470		
		307	16120	3.8	613	2.9	472		
3-03	2	304	18300	3.6	650	3.1	575		
4-03	2	305	20010	3.3	662	3.1	617		
		356	22270	3.4	752	3.1	694		
5-04	2	295	19960	3.4	684	3.2	635		

GRANDDAM: GOOD-VUE RENOS RUBY

100154872
GOLD 4-03 2 295 20020 3.6 FAT 728 3.1 PRT 617

Good-Vue Ayr Farms

MICHAEL & LINDA HANSON, DAVID, MATTHEW & STEVEN

35400 St. Hwy 1 NE, Goodridge, MN 56725

(218) 378-4588

miliha@gvtel.com

GOOD-VUE POKERS CHENISE-ET

EXCELLENT-90



GOOD-VUE POKERS CHENISE-ET

PUREBRED AYRSHIRE 11/03/10 FEMALE
 840003006892495
 4-09 90 P8 +441

NM\$ +111
 PTA +2.93SCC +0.4PL +0.1DPR
 PTA +483M +16F +12P 50R
 PTA\$ +111CY 8/15
 PTA%
 PTAT +.30T -.02 -.02
 PPA +1672M +87F +54P 56R 8/15

CLASS ST6 SR6 BD7 DF6 RA4 RW6 LS6 FA7
 FUS UH5 UW5 UC5 UD5 TP6 TL3 LR7

GOLD % FAT % PRT
 2-04 2 300 16630 3.9 647 3.2 540
 3-04 2 305 22250 3.8 838 3.1 696
 322 22980 3.8 869 3.1 722

DUE MARCH 2016 TO SEXED DEMPSEY

THIS COW FAMILY IS NOTED FOR EXCEPTIONAL LONGEVITY, TREMENDOUS UDDERS & OUTSTANDING FEET & LEGS

CHIA GRANDDAUGHTER:

GOOD-VUE BURDETTE CHERISH, EX-90
 4-07 2 300 20610 3.4 695 3.1 637
 RANKED #48 8/15 ELITE CPI LIST

DES CHAMOIS POKER-ET

8401621C
 PTA +2.84SCC +0.7PL -2.1DPR
 PTA +109M +17F +4P 98R
 PTA% +.07
 PTAT +.30T 97R 8/15
 D/AV 19402M 4.0 769F 3.1 610P 8.4T

GOOD-VUE SPEC. CHIA

100216781 8-01 91

GOLD % FAT % PRT
 2-05 2 332 19110 3.5 666 3.0 578
 3-06 2 365 23420 3.4 806 3.0 696
 4-09 2 309 20580 3.5 721 3.1 645
 5-09 2 356 23040 3.3 768 3.1 705
 6-10 2 345 22520 3.5 787 3.1 696
 8-00 2 365 23080 3.2 746 2.9 658
 10-05 2 365 26940 3.2 854 2.9 792
 LIFE 2570 163920 3.4 5525 3.0 4943

GRANDDAM: TAMAR CANDY CING

1018977 6-11 90

GOLD % FAT % PRT
 2-07 2 289 15560 3.8 586 3.1 484
 3-06 2 291 19410 3.4 655 3.1 598
 4-06 2 291 19750 3.5 690 3.0 590
 5-06 2 358 23700 3.9 936 3.1 723
 6-08 2 304 21240 3.7 794 3.0 645
 7-08 2 365 23860 3.9 928 3.1 742
 8-10 2 365 23770 3.5 822 3.0 717
 LIFE 2711 169170 3.7 6261 3.1 5205

Good-Vue Ayr Farms

MICHAEL & LINDA HANSON, DAVID, MATTHEW & STEVEN

35400 St. Hwy 1 NE, Goodridge, MN 56725

(218) 378-4588

miliha@gvtel.com

GOOD-VUE POKERS GLIMMER

EXCELLENT-92 2E



GOOD-VUE POKERS GLIMMER

PUREBRED AYRSHIRE 06/18/08 FEMALE
840003000764036
6-05 92 2E P5 +403

NM\$	+115								
PTA	+2.82SCC	+1.5PL	-0.2DPR						
PTA	-18M	+14F	-2P	49R					
PTA\$	+115CY			8/15					
PTA%	+0.08		-.01						
PTAT			50R	8/15					
PPA	+311M	+91F	+16P						
CLASS	ST5	SR4	BD5	DF9	RA4	RW6	LS5	FA5	
	FU5	UH9	UW8	UC5	UD5	TP8	TL5	LR7	
GOLD									
2-02	2	305	15440	4.0		618	3.0	460	
		308	15559	4.0		623	3.0	463	
3-02	2	286	11358	4.2		481	3.6	407	
4-01	2	305	19850	4.0		797	3.2	641	
		317	20490	4.0		825	3.2	662	
5-01	2	284	18810	4.0		747	3.4	635	
6-00	2	305	21940	4.1		907	3.2	710	
		362	24760	4.3		1053	3.3	815	

1ST SUMMER YEARLING - 2009 INTERNATIONAL JR
NOM ALL-AMERICAN SUMMER YEARLING - 2009
JR ALL-AMERICAN SUMMER YEARLING - 2009
2ND AGED COW - 2014 CENTRAL NATIONAL JR
NOM ALL-AMERICAN AGED COW - 2014
HM JR ALL-AMERICAN AGED COW - 2014

DES CHAMOIS POKER-ET

8401621C
PTA +2.84SCC +0.7PL -2.1DPR
PTA +109M +17F +4P 98R
PTA% +.07
PTAT +.30T 97R 8/15
D/AV 19402M 4.0 769F 3.1 610P 8.4T

GOOD-VUE TRI-STAR GLORY

100425543 3-02 81
GOLD % FAT % PRT
2-08 2 305 17290 3.7 639 3.1 544
359 19480 3.7 719 3.2 623

GRANDDAM: GOOD-VUE GABY'S GLENIS

1004662 5-04 90
GOLD % FAT % PRT
2-08 2 305 17680 4.4 772 3.3 580
330 18830 4.3 819 3.3 621
3-09 2 272 18600 4.5 835 3.4 634
4-09 2 305 21310 3.9 828 3.2 692
337 22540 3.9 875 3.3 736
5-11 2 305 19450 3.8 738 3.1 594
365 22450 3.8 861 3.1 706
7-04 2 305 20100 3.8 757 3.2 637
8-05 2 305 18150 3.4 620 3.2 577
318 18610 3.4 639 3.2 594
9-05 2 305 19740 3.5 694 3.1 604
LIFE 2875 170860 3.9 6651 3.2 5521

Good-Vue Ayr Farms

MICHAEL & LINDA HANSON, DAVID, MATTHEW & STEVEN

35400 St. Hwy 1 NE, Goodridge, MN 56725

(218) 378-4588

miliha@gvtel.com

VALES-PRIDE REALITY ODEILIA

VERY GOOD-87



VALES-PRIDE REALITY ODEILIA

PUREBRED AYRSHIRE 03/04/11 FEMALE
100608214

3-03 87 ELITE P9 +499

NM\$ +392
PTA +2.80SCC +4.1PL +1.1DPR
PTA +821M +46F +19P 56R
PTA\$ +392CY 8/15
PTA%
PTAT +.70T -.04 8/15
PPA +3653M +199F +87P

CLASS ST8 SR3 BD6 DF9 RA5 RW5 LS6 FA5
FU4 UH7 UW8 UC9 UD6 TP5 TL7 LR8

			%	FAT	%	PRT	
2-00	2	305	21090	4.9	1028	2.9	604
		338	22590	4.9	1115	2.9	663
3-02	2	305	24420	4.8	1178	3.1	751
		365	28780	4.9	1421	3.1	903

2ND SPRING CALF - 2011 MID-ATLANTIC NAT'L JR

2ND SPRING CALF - 2011 CENTRAL NATIONAL JR

NOM ALL-AMERICAN SPRING CALF - 2011

NOM JR ALL-AMERICAN SPRING CALF - 2011

2ND SPRING YRLG - 2012 MID-ATLANTIC NAT'L JR

3RD SPRING YRLG - 2012 MID-ATLANTIC NAT'L

1ST SPRING YRLG - 2012 CENTRAL NATIONAL JR

RES JUNIOR CHAMPION - 2012 CENTRAL NAT'L JR

NOM ALL-AMERICAN SPRING YEARLING - 2012

RES JR ALL-AMERICAN SPRING YEARLING - 2012

2ND JR 2 - 2013 MID-ATLANTIC NATIONAL JR

2ND JR 3 - 2014 MID-ATLANTIC NATIONAL JR

RANKED #33 8/15 ELITE CPI LIST

LESSARD JUMPER MATING CONTRACTED
TO SELECT SIRE

PALMYRA TRI-STAR REALITY

100369452

PTA +2.94SCC +1.6PL +0.1DPR
PTA +685M +34F +9P 95R
PTA% +.04 -.07
PTAT +.60T 92R 8/15
D/AV 20547M 4.0 825F 3.1 635P 8.5T

VALES-PRIDE EXTREME ODYSSEY

100416967 5-06 86

			%	FAT	%	PRT	
2-01	2	305	19350	4.9	939	3.1	607
		365	22720	4.9	1116	3.2	721
3-03	2	305	16300	4.7	767	3.3	540
		365	18770	4.7	886	3.4	630
4-06	2	305	19980	5.3	1062	3.2	635
		330	20920	5.3	1111	3.2	668
5-06	2	288	17350	4.5	784	3.0	529
6-06	2	272	20580	4.2	867	2.7	555
7-04	2	305	20320	4.7	945	2.7	553
		309	20500	4.6	953	2.7	559
LIFE	2075	129860	4.8	6175	3.0	3960	

GRANDDAM: VALES-PRIDE KELLY ONEIDA

100164468 5-06 84

			%	FAT	%	PRT	
2-10	2	305	16620	4.9	819	3.2	540
		351	18530	5.0	922	3.3	606
3-11	2	305	16540	4.8	798	3.3	539
		317	16950	4.8	817	3.3	553
5-01	2	277	17040	5.6	958	3.0	514

Vales-Pride Farm

THE VALENTINE FAMILIES

16901 Bollinger School Rd., Emmitsburg, MD 21727

Amanda Cell (301) 447-3846

Mark Cell (240) 674-6092

ayrshireluvr@netzero.com

VALES-PRIDE TRI-MAGIC JIANNI

EXCELLENT-91 3E



VALES-PRIDE TRI-MAGIC JIANNI

PUREBRED AYRSHIRE 01/11/04 FEMALE
 100337600 11-01 91 3E P6 +380
 NM\$ -76
 PTA +3.02SCC -1.1PL -1.7DPR
 PTA -19M -1F -3P 55R
 PTA\$ -76CY 8/15
 PTA% -.01
 PTAT 60R 8/15
 PPA +2097M +111F +61P

CLASS	ST8	SR7	BD9	DF7	RA5	RW7	LS6	FA6
	FU6	UH7	UW8	UC7	UD3	TP6	TL7	LR6
GOLD				%	FAT	%	PRT	
2-06	2	305	20600	4.8	988	3.2	654	
		365	23590	4.8	1141	3.2	761	
3-09	2	293	20330	4.8	973	3.4	686	
4-08	2	305	21080	4.3	910	3.3	694	
		320	21670	4.3	939	3.3	715	
5-09	2	305	23120	4.8	1114	3.3	754	
		356	25800	4.8	1230	3.3	851	
6-10	2	305	23400	5.1	1202	3.0	708	
		365	26180	5.0	1321	3.1	810	
8-04	2	305	24080	4.5	1080	3.1	745	
		365	27200	4.5	1216	3.1	843	
9-06	2	305	21430	4.4	933	3.1	657	
		340	22730	4.4	990	3.1	703	
10-07	2	305	20300	4.0	819	3.1	628	
LIFE	2825	192320	4.6	8844	3.2	6164		

2ND 100,00 LB COW - 2013 MID-ATLANTIC NAT'L

SKI-PAL GOOD-VUE TRI MAGIC

150123
 PTA +3.19SCC -1.9PL -1.3DPR
 PTA -154M -15F -9P 91R
 PTA% -.05 -.02
 PTAT +.20T 88R 8/15
 D/AV 17919M 3.8 679F 3.1 551P 8.3T

VALES-PRIDE PEPPER JULES

1012459 4-02 87

GOLD				%	FAT	%	PRT
2-07	2	305	17470	5.0	869	3.0	517
3-08	2	305	18730	4.5	837	3.1	588
6-02	2	292	27200	4.1	1106	2.8	770
7-02	2	305	25760	4.9	1264	2.9	740
		365	27870	4.9	1353	2.9	809
8-04	2	305	21740	4.6	999	2.8	619
		315	22260	4.6	1021	2.8	634
9-04	2	266	20900	4.6	962	2.7	571
LIFE	2372	164490	4.4	7261	2.9	4823	

GRANDDAM: VALES-PRIDE CARL JULYA

979895 5-05 83

DHI				%	FAT	%	PRT
4-01	2	305	15860	4.3	677	3.5	552
5-04	305	16520	4.4	721	3.4	568	

Vales-Pride Farm

THE VALENTINE FAMILIES

16901 Bollinger School Rd., Emmitsburg, MD 21727

Amanda Cell (301) 447-3846

Mark Cell (240) 674-6092

ayrshireluvr@netzero.com

GRAND-VIEW BBBK DREAMER

EXCELLENT-93 3E



GRAND-VIEW BBBK DREAMER

PUREBRED AYRSHIRE 09/11/06 FEMALE
 100463697 7-02 93 3E P5 +398
 NM\$ -14
 PTA +3.08SCC +2.8PPL +0.9DPR
 PTA -962M -24F -18P 63R
 PTA\$ -14CY 8/15
 PTA%
 PTAT +1.70T 70R 8/15
 PPA -1999M -12F -27P

CLASS	ST8	SR8	BD7	DF7	RA6	RW9	LS6	FA7
	FU8	UH9	UW9	UC8	UD6	TP9	TL6	LR9
			%	FAT	%	PRT		
GOLD								
2-06	2	305	14610	4.4	646	3.3	489	
		334	15770	4.5	702	3.4	531	
3-06	2	305	16510	3.6	598	3.3	541	
		364	17560	3.6	640	3.3	581	
4-09	2	305	21150	4.5	958	3.3	695	
		365	24310	4.4	1059	3.3	807	
6-08	2	305	20170	4.1	835	3.2	650	
		365	23650	4.1	964	3.3	774	

3RD FALL YEARLING - 2008 CENTRAL NATIONAL
 HM ALL-AMERICAN FALL YEARLING - 2008

EMBRYOS AVAILABLE:
 IVF BY SORTED CALIMERO & GENTLEMAN
 CONVENTIONAL EMBRYOS BY SEXED
 BURDETTE

BLACKADDAR B B KELLOGG

777850C
 PTA +3.13SCC -0.1PL -0.3DPR
 PTA -910M -43F -20P 98R
 PTA% -0.04 +.05
 PTAT +1.00T 97R 8/15
 D/AV 17808M 3.9 688F 3.2 569P

GRAND-VIEW CORNELIUS DRAMA

100261866 7-02 91

GOLD			%	FAT	%	PRT
2-03	2	312	16510	4.1	680	3.2
3-03	2	268	13910	4.0	554	3.2
4-03	2	305	17950	4.0	715	3.2
5-06	2	314	21560	4.0	856	3.1
6-06	2	279	21450	4.0	857	3.0

GRANDDAM: GRAND-VIEW OLY 2 DIVA

100033814 11-07 90 2E

GOLD			%	FAT	%	PRT
5-02	2	295	18870	4.3	804	2.9
6-02	2	331	19390	4.0	773	3.1
7-03	2	301	17930	4.1	736	3.0
8-03	2	305	18430	4.1	748	3.0
LIFE	3462	205340	4.1	8405	3.0	6067

DREAMER DAUGHTERS:

DEA, EX-91, ALL-AMERICAN JR 3
 IVF EMBRYOS AVAILABLE BY SORTED
 PREDATOR
 DIAMOND, EX-91, RES ALL-AMERICAN JR 3
 DREAMBOAT, EX-90
 DELLS, VG-89 (MAX SCORE)

Grand-View Ayrshires

TIM & KATIE BUSCH

N6470 County Road C

Cecil, WI 54111

(920) 609-7476

tb1972@frontiernet.net

BARRENS-VIEW TSB MARGARITA EXCELLENT-91



BARRENS-VIEW TSB MARGARITA

PUREBRED AYRSHIRE 11/03/11 FEMALE
71088368
3-03 91 P9 +513

NM\$	+222							
PTA	+2.79SCC	-0.3PL	-0.2DPR					
PTA	+935M	+34F	+22P	48R				
PTA\$	+222CY				8/15			
PTA%		-.01	-.04					
PTAT	+1.50T		54R	8/15				
PPA	+3683M	+143F	+94P					
CLASS	ST7	SR5	BD7	DF6	RA3	RW5	LS5	FA8
	FU7	UH6	UW7	UC6	UD6	TP6	TL3	LR7
DHI				%	FAT	%	PRT	
2-02	2	305	19660	3.8	747	2.8	549	
		307	19740	3.8	751	2.8	552	

RANKED #19 ON 8/15 ELITE CPI LIST

PALMYRA TRI-STAR BURDETTE-ET

100419568
PTA +2.80SCC +1.4PL +0.8DPR
PTA +429M +14F +18P 98R
PTA% -.01 +.02
PTAT +1.80T 97R 8/15
D/AV 19799M 3.9 774F 3.2 628P 8.5T

S&M-AYR HERMAN'S MARIE

100563061 5-11 92 2E

DHI			%	FAT	%	PRT
2-08	2	305	19990	4.0	801	2.9 575
		355	22120	4.0	894	2.9 638
3-09	2	305	20480	3.6	735	2.8 572
5-02	2	305	23430	3.7	863	2.7 636
		344	25560	3.7	942	2.8 704

1ST JR 3 - 2012 MID-ATLANTIC NATIONAL JR
RES JR ALL-AMERICAN JR 3-YEAR-OLD - 2012
3RD 4-YEAR-OLD - 2013 MID-ATLANTIC NAT'L JR
3RD 5-YEAR-OLD - 2014 MID-ATLANTIC NATIONAL
NOM JR ALL-AMERICAN 5-YEAR-OLD - 2014

GRANDDAM: S&M-AYR PLUTO'S MAMIE

100479319 4-00 84

GOLD			%	FAT	%	PRT
2-03	2	305	12190	4.3	522	3.0 360
3-07	2	305	18750	4.1	770	3.0 563
		362	20750	4.1	852	3.0 628
4-09	2	305	18980	4.0	754	3.0 563
		361	20600	4.0	815	3.0 617
5-11	2	305	18560	4.1	758	2.9 539

Barrens View Farm
THE BAUMGARDNER FAMILY

237 W Barrens Church Rd
Dillsburg PA 17019

Dan (717) 432-3169 • Justin (717) 357-2524 • Nathan (717) 357-2563

E-mail: wildcowz@hughes.net

S&M-AYR HERMAN'S MARIE

EXCELLENT-92 2E



S&M-AYR HERMAN'S MARIE

PUREBRED AYRSHIRE 03/09/09 FEMALE
 100563061 5-11 92 2E P9 +468
 NM\$ +112
 PTA +2.77SCC -1.6PL -0.8DPR
 PTA +962M +32F +14P 50R
 PTA\$ +112CY 8/15
 PTA%
 PTAT +.60T .55R 8/15
 PPA +3518M +129F +61P

CLASS	ST6	SR6	BD8	DF5	RA4	RW6	LS5	FA5
	FU7	UH7	UW6	UC5	UD5	TP6	TL3	LR8
DHI	% FAT % PRT							
2-08	2	305	19990	4.0	801	2.9	575	
		355	22120	4.0	894	2.9	638	
3-09	2	305	20480	3.6	735	2.8	572	
5-02	2	305	23430	3.7	863	2.7	636	
		344	25560	3.7	942	2.8	704	

 1ST JR 3 - 2012 MID-ATLANTIC NATIONAL JR
 RES JR ALL-AMERICAN JR 3-YEAR-OLD - 2012
 3RD 4-YEAR-OLD - 2013 MID-ATLANTIC NAT'L JR
 3RD 5-YEAR-OLD - 2014 MID-ATLANTIC NATIONAL
 NOM JR ALL-AMERICAN 5-YEAR-OLD - 2014
 2ND AGED COW - 2015 MID-ATLANTIC NAT'L JR

VISSERDALE HERMAN

100115017
 PTA +2.65SCC -3.5PL -1.4DPR
 PTA +919M +22F +15P 96R
 PTA% .-.07 -.07
 PTAT -.10T .92R 8/15
 D/AV 19734M 3.8 751F 3.1 604P 8.3T

S&M-AYR PLUTO'S MAMIE

100479319 4-00 84

GOLD			%	FAT	%	PRT
2-03	2	305	12190	4.3	522	3.0
3-07	2	305	18750	4.1	770	3.0
		362	20750	4.1	852	3.0
4-09	2	305	18980	4.0	754	3.0
		361	20600	4.0	815	3.0
5-11	2	305	18560	4.1	758	2.9

GRANDDAM:

S&M-AYR JASON'S MARTHA 2ND

100224852 8-05 87

GOLD			%	FAT	%	PRT
2-11	2	305	13950	4.1	566	3.0
4-01	2	305	15330	4.1	629	3.0
5-06	2	305	23060	3.8	873	2.7
6-09	2	305	22530	3.8	854	2.9
8-01	2	305	19560	3.6	713	2.8
		344	20940	3.6	764	2.9
9-02	2	305	17270	3.7	636	3.1
		340	18720	3.7	687	3.1
10-03	2	224	11350	3.9	438	2.9
LIFE	2525	139010	3.9	5382	3.0	4133

Barrens View Farm
 THE BAUMGARDNER FAMILY

237 W Barrens Church Rd
 Dillsburg PA 17019

Dan (717) 432-3169 • Justin (717) 357-2524 • Nathan (717) 357-2563

E-mail: wildcowz@hughes.net

KLER-VU RAMIUS CHRISTMAS

EXCELLENT-93 2E



KLER-VU RAMIUS CHRISTMAS

PUREBRED AYRSHIRE 12/24/09 FEMALE
 69247784 5-06 93 2E P9 +467
 NM\$ +154
 PTA +3.24SCC +0.6PL +1.0DPR
 PTA +582M +22F +16P 47R
 PTA\$ +154CY 8/15
 PTA%
 PTAT +.60T 45R 8/15
 PPA +2077M +58F +56P
 CLASS ST9 SR7 BD7 DF6 RA3 RW7 LS5 FA7
 FU6 UH6 UW7 UC6 UD5 TP5 TL4 LR8
 GOLD % FAT % PRT
 2-02 3 305 25050 3.6 913 3.1 784
 340 26650 3.7 983 3.1 838
 3-02 2 305 23170 4.3 1005 3.0 693
 365 27823 4.3 1208 3.0 845

 2ND WINTER CALF - 2010 EASTERN STATES NAT'L
 1ST WINTER YEARLING - 2011 INTERNATIONAL
 ALL-AMERICAN WINTER YEARLING - 2011
 1ST SR 2-YEAR-OLD - 2012 INTERNATIONAL
 ALL-AMERICAN (TIE) SR 2-YEAR-OLD - 2012
 1ST SR 3-YEAR-OLD - 2013 INTERNATIONAL
 INTERMEDIATE CHAMPION - 2013 INTERNATIONAL
 ALL-AMERICAN SR 3-YEAR-OLD - 2013

EMBRYOS AVAILABLE

GALNEY-EPC GALANT RAMIUS

100216624
 PTA +3.51SCC +0.3PL +1.9DPR
 PTA +4M -2F +3P 96R
 PTA% -.01 +.02
 PTAT +.90T 94R 8/15
 D/AV 19205M 3.9 743F 3.1 604P 8.5T

PINEVILLE-FARM PARDNER LEXUS

100519361 5-06 92
 GOLD % FAT % PRT
 2-07 3 305 26180 4.2 1109 3.1 818
 4-02 3 305 22030 4.5 993 3.1 680
 312 22420 4.5 1010 3.1 695
 5-02 3 305 36430 3.9 1414 2.9 1043
 365 44520 4.1 1840 2.9 1280
 6-02 3 305 36280 4.6 1686 3.0 1101
 LIFE 1573 142650 4.4 6207 3.1 4378

GRANDDAM: PINEVILLE-FARM HEXEL

100241312 5-03 83
 GOLD % FAT % PRT
 2-02 2 276 18100 4.2 754 3.1 562
 3-01 2 305 22620 4.2 955 3.1 700
 316 23260 4.2 984 3.1 721
 4-02 2 305 22900 4.1 950 3.1 719
 350 24990 4.2 1044 3.2 789
 5-03 2 305 18600 4.1 771 3.1 569
 306 18630 4.1 773 3.1 570
 6-03 2 305 17940 3.9 701 3.0 544
 7-06 2 305 14200 4.0 571 3.2 455
 326 14590 4.0 589 3.2 469
 LIFE 1992 120580 4.1 4981 3.1 3766

Kler-Vu Dairy
TOM GILLETTE
 5137 Old Route 12, Lyonsfalls, NY 13368
 (315) 982-7707
 j.gillette@southlewis.org

SPRING-RUN BENDIG INDIGO

GOOD PLUS-83



SPRING-RUN BENDIG INDIGO

97.68% AYRSHIRE 02/24/12 FEMALE
 100634949 3-03 83 P9 +485
 NM\$ +223
 PTA +3.06SCC -1.9PL -0.8DPR
 PTA +554M +49F +32P 45R
 PTA\$ +223CY 8/15
 PTA% +.14 +.08
 PTAT +.30T 47R 8/15
 PPA +1947M +147F +110P
 CLASS ST6 SR5 BD6 DF5 RA5 RW5 LS4 FA4
 FU6 UH7 UW6 UC5 UD6 TP4 TL4 LR6
 2-03 2 276 13738 4.4 606 3.5 487
 3-01 2 118 10219 4.5 459 3.2 327
 RIP
 ME 20124 4.5 914 3.3 670
 RANKED #67 ON 8/15 ELITE CPI LIST

PALMYRA JERRY BENDIG-ET

100323168
 PTA +2.80SCC +0.6PL -1.8DPR
 PTA +955M +40F +27P 94R
 PTA% +.02 -.02
 PTAT +.60T 90R 8/15
 D/AV 20097M 3.9 789F 3.2 640P 8.4T

SPRING-RUN PHILLIP ISSADORA

100548763 3-06 83 95.37%
 DHI % FAT % PRT
 2-06 2 277 15270 4.9 745 3.7 571
 3-04 2 305 18670 4.9 916 3.8 704
 318 18950 4.9 934 3.8 717
 4-05 2 305 18240 5.3 958 3.6 658
 320 18560 5.3 981 3.6 674
 5-05 2 305 13840 5.1 703 3.7 513
 317 13990 5.1 710 3.7 520

GRANDDAM: SPRING-RUN LOUANGE ISI

100274987 7-00 82
 DHI % FAT % PRT
 2-01 2 300 13200 3.9 517 3.2 420
 3-00 2 305 16550 4.0 666 3.3 542
 326 16950 4.1 687 3.3 559
 4-01 2 305 14690 4.1 601 3.2 472
 362 16090 4.2 670 3.3 523
 5-03 2 305 16180 4.0 655 3.1 505
 335 16900 4.1 688 3.1 531

Spring-Run Farm

THOMAS A WOLF & FAMILY

5729 Brown Rd., Shreve, OH 44676

(330) 567-3486 • vwolf4141@embarqmail.com

Tim Wolf: (330) 749-9047 • Lisa Wolf Gress (330) 567-3417

MACKINSON RISTOURN PAISLEY

EXCELLENT-92 2E



MACKINSON RISTOURN PAISLEY

91.42% AYRSHIRE 03/02/10 FEMALE 91.42%
 100585142 5-05 92 2E P9 +495

NM\$ +266
 PTA +2.96SCC +2.0PL +1.1DPR
 PTA +588M +24F +20P 42R
 PTA\$ +266CY 8/15
 PTA% +.01 +.01
 PTAT +.50T 51R 8/15
 PPA +2866M +98F +83P

CLASS ST7 SR5 BD7 DF8 RA4 RW7 LS5 FA3
 FUG UH6 UW7 UC7 UD5 TP6 TL3 LR8

2-02 2 305 18419 3.7 681 3.3 608
 3-04 2 305 20009 3.6 720 3.1 620
 4-04 2 305 23116 3.9 901 3.4 786
 5-05 2 63 5407 4.1 222 3.3 178
 RIP

RANKED #40 ON 8/15 ELITE CPI LIST

LAGACE RISTOURN

101501602C 82.85%
 PTA +2.87SCC +3.5PL +0.9DPR
 PTA +666M +37F +28P 95R
 PTA% +.06 +.03
 PTAT +.50T 93R 8/15
 D/AV 19858M 3.8 763F 3.2 631P 8.4T

MACKINSON SPECIAL K POLLY

100438833

DHI	%	FAT	%	PRT
3-00 2 305	17030 3.4	585 3.2	553	
4-01 2 305	24280 3.7	900 3.1	750	
	357 27340 3.8	1038 3.2	862	
5-03 2 305	19160 3.7	714 3.0	581	
	306 19180 3.7	716 3.0	582	
6-03 2 305	22870 3.9	894 3.2	734	
	335 24450 4.0	974 3.3	800	

GRANDDAM: DUKE-AYR CORNELIUS PIXIE

100128594

DHI	%	FAT	%	PRT
3-04 2 305	17840 3.9	692 3.5	617	
	364 19940 4.0	788 3.5	700	
4-06 2 305	14890 4.0	601 3.7	549	
6-01 2 305	22660 3.6	813 3.3	746	

Mackinson Dairy Farm

DONALD & RITA, MARY & JESSE, MATT & AMY, & DAVID MACKINSON

17427 E. 2125 N. Rd., Pontiac, IL 61764

Mary cell: (309) 533-1814 • Matt cell: (815) 830-4464

mackinson.mary@gmail.com

PALMYRA BERKELY P ROSY

VERY GOOD-88



PALMYRA BERKELY P ROSY

PUREBRED AYRSHIRE 09/02/12 FEMALE
 71350654 2-05 88 P9 +473
 NM\$ +154
 PTA +3.15SCC +1.1PL -1.2DPR
 PTA +318M +26F +10P 52R
 PTA\$ +154CY 8/15
 PTA%
 PTAT +1.30T +.07 47R 8/15
 PPA +1695M +132F +71P
 CLASS ST8 SR5 BD7 DF6 RA4 RW6 LS6 FA7
 FU7 UH6 UW6 UC7 UD7 TP6 TL3 LR7
 2-00 2 305 22303 4.7 1048 3.3 726
 332 24066 1135 786

NOM ALL-AMERICAN FALL CALF - 2013

FULL SISTER TO REAGAN AT SELECT SIRE
 MATERNAL SISTER TO ROUSH AT SELECT SIRE

EMBRYOS AVAILABLE FOR EXPORT TO ANY COUNTRY

FROM THE FAMILY THAT PRODUCED REALITY, RAMIUS, RANEY & RONDO

PALMYRA BENDIG BERKELY-ET

69261805
 PTA +2.92SCC +0.7PL -1.1DPR
 PTA +551M +10F +7P 82R
 PTA% -.05 -.05
 PTAT +.70T 69R 8/15
 D/AV 20963M 3.9 822F 3.1 653P 8.4T

PALMYRA POKER LH ROSY-ET

66596106 4-01 92 ELITE
 GOLD % FAT % PRT
 2-00 2 298 19900 4.5 896 3.3 654
 3-00 2 305 22420 4.5 1012 3.5 789
 365 26100 4.4 1161 3.5 910

NOM ALL-AMERICAN JR 2-YEAR-OLD - 2011

1ST JR 3 - 2012 MID-ATLANTIC NATIONAL

NOM ALL-AMERICAN JR 3-YEAR-OLD - 2012

1ST 4-YEAR-OLD - 2013 MID-ATLANTIC NATIONAL

2ND 4-YEAR-OLD - 2013 INTERNATIONAL

RES ALL-AMERICAN 4-YEAR-OLD - 2013

GRANDDAM: GALNEY-EPC LH. ROSY-ET

100110610 3-09 90
 GOLD % FAT % PRT
 2-00 2 365 25010 3.7 920 3.0 745
 3-03 2 365 30679 3.9 1210 3.2 969
 4-06 2 365 32980 3.8 1238 3.1 1014
 5-08 2 365 29185 3.9 1125 3.1 918
 LIFE 1684 126800 3.8 4806 3.1 3970

ALL-AMERICAN FALL YEARLING IN MILK - 2001

JR ALL-AMERICAN FALL YEARLING IN MILK - 2001

2ND SR 2 - 2002 MID-ATLANTIC NATIONAL

1ST SR 2 - 2002 MID-ATLANTIC NATIONAL JR

2ND SR 2-YEAR-OLD - 2002 CENRAL NATIONAL JR

NOM JR ALL-AMERICAN SR 2-YEAR-OLD - 2002



18811 Wagaman Rd.
 Hagerstown, MD 21740
 Phone: (301) 739-2729
 Fax: (301) 733-9255
 palmyraayrshires@aol.com
 www.palmyrafarm.net

EMERALD-FARMS POKERS SWEETHING EXCELLENT-92



EMERALD-FARMS POKERS SWEETHING

PUREBRED AYRSHIRE 10/03/11 FEMALE
100631647

3-08 92 P7 +438

NM\$	+62							
PTA	+3.01SCC	+0.1PL	-0.6DPR					
PTA	+77M	+11F	+6P	48R				
PTA\$	+62CY			8/15				
PTA%		+0.04	+0.02					
PTAT	+0.70T		46R	8/15				
PPA	+2245M	+142F	+81P					
CLASS	ST9	SR8	BD9	DF8	RA5	RW8	LS6	FA6
	FU9	UH8	UW9	UC8	UD7	TP5	TL4	LR9
GOLD								
	1-11	2	305	15080	4.7	712	3.3	495
			365	17680	4.7	828	3.3	594
	3-06	2	154	10910	4.0	440	3.0	334
			ME	17810		701		568

 1ST FALL CALF - 2012 CENTRAL NATIONAL JR
 3RD FALL CALF - 2012 SOUTHERN NATIONAL JR
 JR ALL-AMERICAN FALL CALF - 2012
 3RD FALL YRLG IN MILK - 2013 CENTRAL NAT'L JR
 2RD FALL YRLG IN MILK - 2013 SOUTHERN NAT'L JR
 2ND FALL YRLG IN MILK - 2013 SOUTHERN NAT'L
 NOM JR ALL-AMERICAN FALL YRLG IN MILK - 2013
 3RD SR 2 - 2014 CENTRAL NATIONAL JR
 1ST SR 2-OLD - 2014 SOUTHERN NATIONAL JR
 INTERMEDIATE CHAMP - 2014 SOUTHERN NAT'L JR
 1ST SR 2-YEAR-OLD - 2014 SOUTHERN NATIONAL
 HM JR ALL-AMERICAN SR 2-YEAR-OLD - 2014

DES CHAMOIS POKER-ET

8401621C

PTA	+2.84SCC	+0.7PL	-2.1DPR					
PTA	+109M	+17F	+4P	98R				
PTA%		+0.07						
PTAT	+0.30T		97R	8/15				
D/AV	19402M	4.0	769F	3.1	610P	8.4T		

EMERALD-FARMS KELLYBUCK SWEET

100570252

GOLD				%	FAT	%	PRT
2-06	2	301	13960	3.6	509	3.0	416
3-05	2	221	9950	3.5	348	3.2	323

 3RD SPRING YRLG - 2010 CENTRAL NATIONAL JR
 1ST SPRING YRLG - 2010 SOUTHERN NATIONAL JR
 HM JR ALL-AMERICAN SPRING YEARLING - 2010
 1ST JR 3 - 2012 SOUTHERN NATIONAL JR
 NOM JR ALL-AMERICAN JR 3-YEAR-OLD - 2012

GRANDDAM:

EMERALD-FARMS ESPECIALLY SWEET

100339189 3-11 87

GOLD				%	FAT	%	PRT
2-02	2	365	13590	4.5	607	3.2	435
3-09	2	327	16080	4.5	725	3.2	507
4-10	2	341	17190	4.3	742	3.2	544
6-02	2	314	15670	4.3	671	3.1	492
7-02	2	308	15760	3.9	612	3.1	484
LIFE	2065	100710	4.4	4407	3.2	3203	

 UNAN JR ALL-AMERICAN AGED COW - 2011

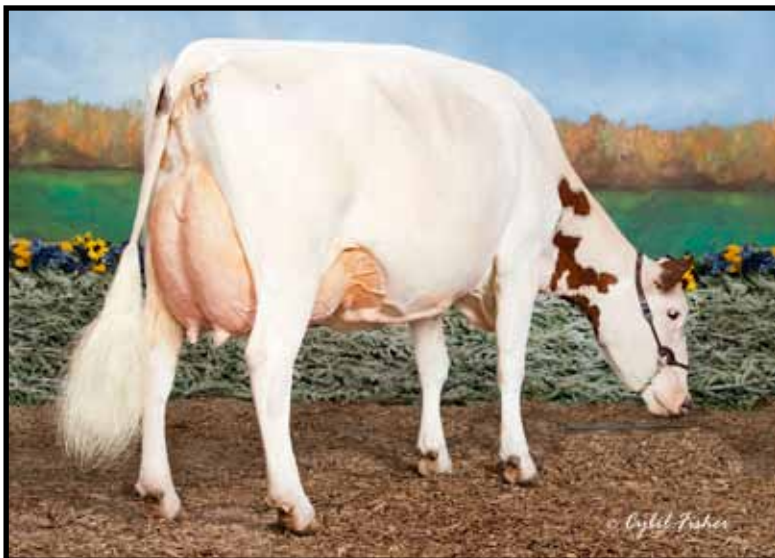
Emerald Farms
THE FENTON & JODREY FAMILIES
 22050 SR 136, Winchester, OH 45697
 (937) 695-0697

Doug: (937) 205-1209
 Tom: (937) 217-0287

Ron: (937) 725-5333
 Joann: (937) 217-0697

GARNET-LANE AVENGER POINSETTIA

EXCELLENT-90



GARNET-LANE AVENGER POINSETTIA

PUREBRED AYRSHIRE 12/15/09 FEMALE

100583588 3-02 90 P8 +425

NM\$ +288
 PTA +2.84SCC +5.5PL +2.0DPR
 PTA -55M +18F +2P 49R
 PTA\$ +288CY 8/15
 PTA% +.11 +.02
 PTAT 42R 8/15
 PPA +307M +126F +31P
 CLASS ST8 SR6 BD7 DF7 RA6 RW7 LS5 FA8
 F08 UH8 UW7 UC7 UD7 TP8 TL7 LR8
 GOLD % FAT % PRT
 1-11 2 287 15680 4.3 673 3.1 485
 2-11 2 305 21530 4.3 918 3.1 657
 4-03 2 310 21220 4.0 847 3.2 674
 5-02 2 154 12921 3.9 500 3.1 398
 RIP

NOM JR ALL-AMERICAN WINTER CALF - 2010
 NOM JR ALL-AMERICAN WINTER YEARLING - 2011
 NOM JR ALL-AMERICAN SR 2-YEAR-OLD - 2012
 NOM JR ALL-AMERICAN SR 3-YEAR-OLD - 2013
 1ST FOUR-YR-OLD - 2014 MID-ATLANTIC NAT'L JR
 SR CHAMPION - 2014 MID-ATLANTIC NATIONAL JR
 GRAND CHAMPION - 2014 MID-ATLANTIC NAT'L JR
 1ST 4-YEAR-OLD - 2014 MID-ATLANTIC NATIONAL
 RES SR CHAMPION - 2014 MID-ATLANTIC NAT'L
 3RD 4-YEAR-OLD - 2014 INTERNATIONAL
 1ST 4-YEAR-OLD - 2014 CENTRAL NATIONAL JR
 SENIOR CHAMPION - 2014 CENTRAL NATIONAL JR
 GRAND CHAMPION - 2014 CENTRAL NATIONAL JR
 NOM ALL-AMERICAN 4-YEAR-OLD - 2014
 JR ALL-AMERICAN 4-YEAR-OLD - 2014
 1ST 5-YEAR-OLD - 2015 MID-ATLANTIC NAT'L JR
 RES SR & RES GRAND - 2015 MID-ATLANTIC NAT'L JR
 1ST 5-YEAR-OLD - 2015 MID-ATLANTIC NAT'L

KELLCREST AVENGER-ET

100273427
 PTA +2.73SCC +4.4PL +1.7DPR
 PTA -36M +5F -1P 96R
 PTA% +.04
 PTAT +.50T 90R 8/15
 D/AV 18298M 4.0 723F 3.1 573P 8.4T

KENT MANOR CHANCELLOR PATCHES

100511372 5-05 88
 2-02 2 365 18964 4.0 764 3.0 563
 3-08 2 356 20956 3.6 762 3.0 622
 4-11 2 282 17801 3.5 629 3.0 515

 3RD SR 2 - 2010 MID-ATLANTIC NATIONAL JR
 3RD SR 3 - 2011 MID-ATLANTIC NATIONAL JR

POINSETTIA'S FULL SISTER:

GARNET-LANE AVENGER PHOENIX
 SR & GRAND CHAMPION, 2015 MD AYRSHIRE
 FIELD DAYS OPEN & JR SHOWS

POINSETTIA'S DAUGHTER:

GARNET-LANE BURDETTE ADDISON
 BEING SHOWN AS A SPRING CALF

Garnet Lane Farm

JOHN, CHERYL,
 KYLE & CASSANDRA PLUMMER
 13730 Gregg Neck Road
 Galena, MD 21635
 John's cell (410) 708-7581

Housed At

Tri-Dee Farm
 DONOVAN HOLLINGSWORTH
 10928 Log Cabin Road
 Denton, MD 21629
 (410) 310-4906

BLIND BUCK VALL O RUSTY-ET

EXCELLENT-90



BLIND BUCK VALL O RUSTY-ET

95.97% AYRSHIRE 12/12/10 FEMALE
 100609112 95.97%
 4-01 90 ELITE P9 +523

NM\$ +351
 PTA +2.87SCC +1.9PL +1.6DPR
 PTA +748M +42F +32P 49R
 PTA\$ +351CY 8/15
 PTA%
 PTAT +.40T 8/15
 PPA +5673M +235F +202P
 CLASS ST9 SR8 BD6 DF4 RA5 RW7 LS6 FA4
 FU9 UH5 UW6 UC8 UD7 TP5 TL2 LR7
 GOLD % FAT % PRT
 2-06 2 305 26640 3.7 976 3.4 904
 361 29840 3.6 1086 3.4 1000

3RD SR 2-YEAR-OLD - 2013 CENTRAL NATIONAL JR
 NOM JR ALL-AMERICAN SR 2-YEAR-OLD - 2013

RANKED #13 ON 8/15 ELITE CPI LIST

GRANDDAM:

BLIND-BUCK-VALLEY SAM ANABELLA

100063833 3-07 84

DHI % FAT % PRT
 3-05 2 302 18260 4.0 737 3.1 572
 4-08 2 267 16450 4.2 694 3.2 519
 5-08 2 279 15650 4.1 642 3.2 497
 7-00 2 305 17990 4.6 831 3.1 560

JELYCA OBLIQUE

7407843C 91.95%
 PTA +2.83SCC +2.9PL +2.2DPR
 PTA +602M +51F +24P 93R
 PTA% +.14 +.03
 PTAT +.40T 90R 8/15
 D/AV 20393M 4.0 816F 3.2 651P 8.3T

BLIND BUCK VALL SOL REDPEPPER

100428210 5-09 94 2E

DHI	%	FAT	%	PRT
2-09 2 305	19240	4.2	801	3.4 651
	308	19370	4.2	806 3.4 656
3-09 2 305	19480	4.3	828	3.4 661
	315	19800	4.3	843 3.4 673
5-08 2 323	29360	4.0	1186	3.1 897

HM JR ALL-AMERICAN FALL CALF - 2006
 NOM JR ALL-AMERICAN FALL YEARLING - 2007
 GRAND CHAMPION - 2008 EASTERN STATES NAT'L JR
 SENIOR CHAMPION - 2008 CENTRAL NATIONAL JR
 INT CHAMPION - 2008 CENTRAL NATIONAL
 GRAND CHAMPION - 2008 CENTRAL NATIONAL JR
 ALL-AMERICAN SR 2-YEAR-OLD - 2008
 JR ALL-AMERICAN SR 2-YEAR-OLD - 2008
 INTERMEDIATE CHAMPION - 2009 INTERNATIONAL
 SENIOR CHAMPION - 2009 INTERNATIONAL JR
 GRAND CHAMPION - 2009 INTERNATIONAL JR
 GRAND CHAMPION - 2009 INTERNATIONAL
 UNAN ALL-AMERICAN SR 3-YEAR-OLD - 2009
 UNAN JR ALL-AMERICAN SR 3-YEAR-OLD - 2009
 RES ALL-AMERICAN 5-YEAR-OLD - 2011

Hall's Ayrshires
GENE HALL JR & PATRICK MYERS & FAMILY
 346494 E. 760 Rd.
 Cushing OK 74023
 Gene: (405) 740-3085 • ghall2088@gmail.com

HALL'S RUBEN FAITH

EXCELLENT-92 2E



HALL'S RUBEN FAITH

PUREBRED AYRSHIRE 03/05/02 FEMALE
100259504

	12-10	92		2E P-	+337				
NM\$	-202								
PTA	+2.91SCC	-3.6PL		+0.8DPR					
PTA	-508M	-12F		-10P		50R			
PTA\$	-202CY					8/15			
PTA%		+0.4		+0.3					
PTAT	-1.20T			38R		8/15			
PPA	+1519M	+83F		+70P					
CLASS	ST9	SR9	BD9	DF8	RA4	RW9	LS5	FA4	
	FU7	UH8	UW8	UC7	UD4	TP4	TL9	LR7	
GOLD				%	FAT	%	PRT		
2-04	2	305	23100	3.9	911	3.2	733		
		312	23530	3.9	927	3.2	747		
3-04	2	305	17920	4.0	720	3.4	610		
4-09	2	305	27660	3.6	994	3.1	870		
		347	29300	3.7	1076	3.2	938		
6-05	2	264	20280	3.2	654	3.3	666		
7-06	2	305	24350	3.3	812	3.3	814		
9-05	2	305	18660	4.7	879	3.6	663		
		345	20190	4.7	943	3.6	717		
10-06	2	288	12370	2.6	325	3.4	425		
LIFE	2411	160210	3.7	5909	3.3	5349			

COVEY-FARMS PATRICK RUBEN-ET

100068025					
PTA	+2.96SCC	-0.5PL		-0.9DPR	
PTA	-53M	-2F		-7P	71R
PTA%				-0.3	
PTAT	-0.60T			56R	8/15
D/AV	19325M	3.6	689F	3.1	603P 8.3T

HALL'S CHOICE SABRA

978406

FAITH'S SHOW PLACINGS:

NOM JR ALL-AMERICAN JUNIOR CALF - 2002
 NOM ALL-AMERICAN SPRING YEARLING - 2003
 HON MEN JR ALL-AMERICAN SPRING YEARLING 2003
 2ND 100,000 LB COW - 2014 INTERNATIONAL
 1ST 100,000 LB COW - 2014 CENTRAL NAT'L JR
 TOTAL PERFORMANCE WINNER - 2014 CENTRAL
 NAT'L JR
 NOM (TIE) ALL-AMERICAN AGED COW - 2014
 RES ALL-AMERICAN 100,000 LB COW - 2014
 NOM JR ALL-AMERICAN AGED COW - 2014
 UNAN JR ALL-AMERICAN AGED COW - 2014
 RES ALL WORLD 8 YEARS & OVER - 2014

Hall's Ayrshires

GENE HALL JR & PATRICK MYERS & FAMILY

346494 E. 760 Rd.

Cushing OK 74023

Gene: (405) 740-3085 • ghall2088@gmail.com

P&A-HALL POKER ADDY-ET

EXCELLENT-92



P&A-HALL POKER ADDY-ET

PUREBRED AYRSHIRE 06/03/10 FEMALE
68847272

4-07 92 P6 +412

NM\$ -15

PTA +2.92SCC -0.7PL -0.3DPR

PTA -318M +4F -6P 42R

PTA\$ -15CY 8/15

PTA% +.09 +.02

PTAT +.80T 55R 8/15

PPA -817M +49F -4P

CLASS ST9 SR7 BD8 DF7 RA4 RW7 LS5 FA6

FU7 UH6 UW7 UC5 UD6 TP6 TL7 LR8

GOLD % FAT % PRT

2-01 2 305 16300 4.4 723 3.7 602

365 19110 4.5 867 3.7 711

3-03 2 305 15760 5.5 866 3.6 570

365 18070 5.4 972 3.7 670

1ST SUMMER YEARLING - 2011 SOUTHERN NAT'L JR

2ND SUMMER YEARLING - 2011 SOUTHERN NATIONAL

NOM JR ALL-AMERICAN SUMMER YEARLING - 2011

3RD JR 2-YEAR-OLD - 2012 SOUTHERN NAT'L JR

3RD JR 2-YEAR-OLD - 2012 SOUTHERN NATIONAL

DES CHAMOIS POKER-ET

8401621C

PTA +2.84SCC +0.7PL -2.1DPR

PTA +109M +17F +4P 98R

PTA% +.07

PTAT +.30T 97R 8/15

D/AV 19402M 4.0 769F 3.1 610P 8.4T

BONNIE BRAE AERO

100536812 4-03 92

GOLD % FAT % PRT

6-00 2 202 12140 3.4 415 2.8 344

1ST JR 3-YEAR-OLD - 2008 CENTRAL NATIONAL

UNAN ALL-AMERICAN JR 3-YEAR-OLD - 2008

2ND 4-YEAR-OLD - 2009 INTERNATIONAL

RESERVE SENIOR CHAMPION - 2009 INTERNATIONAL

1ST 4-YEAR-OLD - 2009 SOUTHERN NATIONAL

RES ALL-AMERICAN 4-YEAR-OLD - 2009

GRANDDAM: BONNIE BRAE NABOB

8370346C

Hall's Ayrshires

GENE HALL JR & PATRICK MYERS & FAMILY

346494 E. 760 Rd.

Cushing OK 74023

Gene: (405) 740-3085 • ghall2088@gmail.com

RIVER-VALLEY RISTOURN REJOICE-ET

GOOD PLUS-84



RIVER-VALLEY RISTOURN REJOICE-ET

91.42% AYRSHIRE 09/11/09 FEMALE
 100642908 91.42%
 4-10 84 ELITE P7 +489

NM\$ +344
 PTA +2.86SCC +3.7PL +0.5DPR
 PTA +339M +34F +21P 50R
 PTA\$ +344CY 8/15
 PTA% +.11 +.05
 PTAT +.60T 47R 8/15
 PPA +505M +82F +52P

CLASS ST5 SR4 BD5 DF3 RA5 RW5 LS5 FA6
 FU6 UH4 UW5 UC7 UD7 TP6 TL5 LR6

RANKED #56 ON 8/15 ELITE CPI LIST

PICTURED ABOVE IS THE GRANDDAM,
 GALNEY-EPC L.H. ROSY-ET

LAGACE RISTOURN

101501602C 82.85%
 PTA +2.87SCC +3.5PL +0.9DPR
 PTA +666M +37F +28P 95R
 PTA% +.06 +.03
 PTAT +.50T 93R 8/15
 D/AV 19858M 3.8 763F 3.2 631P 8.4T

PALMYRA JERRY'S REBA-ET

100279834 5-03 90

DHI	%	FAT	%	PRT
4-01 2 349	25350	4.1	1043	3.2 818
5-02 2 305	24380	4.2	1026	3.0 743
6-10 2 346	13370	5.0	673	3.1 420

1ST FALL YEARLING - 2004 CENTRAL NATIONAL JR
 NOM ALL-AMERICAN FALL YEARLING - 2004
 RES JR ALL-AMERICAN FALL YEARLING - 2004

GRANDDAM: GALNEY-EPC L.H. ROSY-ET

100110610 3-09 90

GOLD	%	FAT	%	PRT	
2-00 2 365	25010	3.7	920	3.0 745	
3-03 2 365	30679	3.9	1210	3.2 969	
4-06 2 365	32980	3.8	1238	3.1 1014	
5-08 2 365	29185	3.9	1125	3.1 918	
LIFE	1684	126800	3.8	4806	3.1 3970

2ND FALL HEIFER CALF - 2000 EASTERN NAT'L JR
 2ND FALL HEIFER CALF - 2000 CENTRAL NAT'L JR
 1ST FALL YRLG IN MILK-2001 SOUTHERN NAT'L
 1ST FALL YRLG IN MILK-2001 SOUTHERN NAT'L JR
 ALL-AMERICAN FALL YEARLING IN MILK - 2001
 JR ALL-AMERICAN FALL YRLG IN MILK - 2001
 2ND SR 2 - 2002 MID-ATLANTIC NATIONAL
 1ST SR 2 - 2002 MID-ATLANTIC NATIONAL JR
 2ND SR 2 - 2002 CENTRAL NATIONAL JR
 NOM JR ALL-AMERICAN SR 2-YEAR-OLD - 2002

River Valley Farm
 THE ALLEN FAMILY
 5151 East Hubbardton Rd.
 Castleton, VT 05735
 (802) 273-2415 • Randy cell: (802) 353-3019

RIVER-VALLEY BB ROCK STAR



RIVER-VALLEY BB ROCK STAR

PUREBRED AYRSHIRE 03/05/14 FEMALE
72508797

P- +418

NM\$ +32
PTA +0F +0P 0R
PTA\$ +32CY 8/15

NOM ALL-AMERICAN SPRING CALF - 2014

ROCK STAR IS NOW OWNED BY
FOUR HILLS FARM, BRISTOL, VT

RIVER-VALLEY RAMIUS BEERBELLY-ET

69820277

RIVER-VALLEY REMINGTON ROMANCE

69820253 4-09 85

PALMYRA JERRY'S REBA-ET

100279834 5-03 90

DHI			%	FAT	%	PRT
4-01	2	305	23290	4.1	959	3.2 742
			349	25350	4.1	1043 3.2 818
5-02	2	305	24380	4.2	1026	3.0 743
6-10	2	346	13370	5.0	673	3.1 420

1ST FALL YEARLING - 2004 CENTRAL NATIONAL JR

NOM ALL-AMERICAN FALL YEARLING - 2004

RES JR ALL-AMERICAN FALL YEARLING - 2004

River Valley Farm

THE ALLEN FAMILY

5151 East Hubbardton Rd.

Castleton, VT 05735

(802) 273-2415 • Randy cell: (802) 353-3019

RIVER-VALLEY SALUTE DEEDRA

EXCELLENT-93 3E



RIVER-VALLEY SALUTE DEEDRA

PUREBRED AYRSHIRE 10/25/06 FEMALE
100508877

8-05 93 3E P- +342

NM\$ +17
PTA +2.86SCC +0.7PL +1.0DPR
PTA +16M -3F -3P 39R
PTA\$ +17CY 8/15
PTA% -.02 -.02
PPA +1661M +47F +38P

CLASS ST9 SR7 BD8 DF8 RA7 RW8 LS5 FA5
FU8 UH9 UW9 UC8 UD6 TP5 TL7 LR8

GOLD		%	FAT	%	PRT
5-07	2	305	22960	4.1	944 3.5 803
			365	25310	4.0 1018 3.5 890
7-08	3	305	28830	2.7	789 3.1 884

1ST SR 3-YEAR-OLD - 2010 CENTRAL NATIONAL JR
1ST SR 3-YEAR-OLD - 2010 SOUTHERN NAT'L JR
2ND SR 3-YEAR-OLD - 2010 SOUTHERN NATIONAL
NOM ALL-AMERICAN SR 3-YEAR-OLD - 2010
JR ALL-AMERICAN SR 3-YEAR-OLD - 2010
2ND 4-YEAR-OLD - 2011 CENTRAL NATIONAL JR
3RD 4-YEAR-OLD - 2011 SOUTHERN NATIONAL
NOM ALL-AMERICAN 4-YEAR-OLD - 2011
HM JR ALL-AMERICAN 4-YEAR-OLD - 2011
1ST 5-YEAR-OLD - 2012 CENTRAL NATIONAL JR
NOM ALL-AMERICAN 5-YEAR-OLD - 2012
JR ALL-AMERICAN 5-YEAR-OLD - 2012
3RD AGED COW - 2014 CENTRAL NATIONAL JR

PALMYRA BATTLE SALUTE-ET

100386341

RIVER-VALLEY JELLY DEE

100097164 5-08 92

GRANDDAM: RIVER-VALLEY MILKY JELLY

976468

DEEDRA IS NOW OWNED BY
FOUR HILLS FARM, BRISTOL, VT

River Valley Farm

THE ALLEN FAMILY

5151 East Hubbardton Rd.

Castleton, VT 05735

(802) 273-2415 • Randy cell: (802) 353-3019

RIVER-VALLEY POKER BONJOVI

EXCELLENT-92 2E



RIVER-VALLEY POKER BONJOVI

PUREBRED AYRSHIRE 12/24/08 FEMALE
66502663

6-03 92 2E P6 +467
 NM\$ +144
 PTA +2.96SCC +0.1PFL -1.5DPR
 PTA +666M +12F +26P 50R
 PTA\$ +144CY 8/15
 PTA%
 PTAT +.30T -.07 +.03
 PPA +2764M +12F +104P 45R 8/15
 CLASS ST8 SR7 BD7 DF8 RA5 RW7 LS3 FA6
 FU6 UH7 UW8 UC7 UD6 TP5 TL4 LR8
 GOLD % FAT % PRT
 3-08 3 305 19410 4.5 872 3.3 637
 365 23760 4.4 1046 3.3 775
 5-06 3 305 35600 2.2 772 3.2 1147

1ST 5-YEAR-OLD - 2014 MID-ATLANTIC NATIONAL
 SENIOR CHAMPION - 2014 MID-ATLANTIC NATIONL
 RES GRAND CHAMPION - 2014 MID-ATLANTIC NAT'L
 2ND 5-YEAR-OLD - 2014 INTERNATIONAL
 1ST 5-YEAR-OLD - 2014 CENTRAL NATIONAL JR
 RES ALL-AMERICAN 5-YEAR-OLD - 2014
 UNAN ALL-AMERICAN 5-YEAR-OLD - 2014
 ALL WORLD 5-YEAR-OLD - 2014

DES CHAMOIS POKER-ET

8401621C
 PTA +2.84SCC +0.7PFL -2.1DPR
 PTA +109M +17F +4P 98R
 PTA% +.07
 PTAT +.30T 97R 8/15
 D/AV 19402M 4.0 769F 3.1 610P 8.4T

PALMYRA BASH BON BON

100508970

GRANDDAM: PALMYRA TRI-STAR R.J. BONNIE

100164749 8-02 92 2E
 GOLD % FAT % PRT
 2-05 2 305 20880 4.2 872 3.4 719
 347 22180 4.2 937 3.5 772
 3-11 2 305 19910 4.0 788 3.4 668
 365 21860 4.0 868 3.4 741
 7-05 2 305 28220 4.3 1207 3.2 913

2ND 5-YEAR-OLD - 2006 MID-ATLANTIC NATIONAL
 1ST 5-YEAR-OLD - 2006 CENTRAL NATIONAL
 ALL-AMERICAN 5-YEAR-OLD - 2006

BONJOVI IS NOW OWNED BY
 FOUR HILLS FARM, BRISTOL, VT

River Valley Farm

THE ALLEN FAMILY
 5151 East Hubbardton Rd.

Castleton, VT 05735

(802) 273-2415 • Randy cell: (802) 353-3019

CONEBELLA RISTOURN'S FALCO EXCELLENT-90



CONEBELLA RISTOURN'S FALCO

91.42% AYRSHIRE 06/09/10 FEMALE
69458679 91.42%
4-08 90 ELITE P9 +484

NM\$ +363
PTA +2.72SCC +3.8PFL +0.5DPR
PTA +455M +29F +23P 49R
PTA\$ +363CY 8/15
PTA% +.06 +.05
PTAT +.50T 61R 8/15
PPA +1399M +43F +58P

CLASS ST5 SR5 BD7 DF8 RA6 RW7 LS5 FA5
FUS UH7 UW7 UC9 UD8 TP5 TL3 LR8

GOLD % FAT % PRT
2-07 2 305 17900 3.2 578 3.3 583
307 18020 3.2 584 3.3 587
3-07 2 297 20140 3.6 732 3.2 642
4-06 PROJ 19069 4.1 782 3.1 591

RANKED #76 ON 8/15 ELITE CPI LIST

LAGACE RISTOURN

101501602C 82.85%
PTA +2.87SCC +3.5PFL +0.9DPR
PTA +666M +37F +28P 95R
PTA% +.06 +.03
PTAT +.50T 93R 8/15
D/AV 19858M 3.8 763F 3.2 631P 8.4T

CONEBELLA MASON'S FALCON

100437690 5-09 83

GOLD	%	FAT	%	PRT
2-04 2 296	16560 4.7	771 3.3	546	
3-03 2 298	18250 4.7	852 3.4	621	
4-02 2 305	16640 4.1	683 3.3	554	
	316 16870 4.1	693 3.3	563	
5-05 2 257	14500 4.6	674 3.4	488	

GRANDDAM: CONEBELLA JERRY'S CARDINAL

100390137 3-07 86

GOLD	%	FAT	%	PRT
1-11 2 305	22440 3.4	757 3.4	770	
	365 26460 3.5	934 3.5	938	
3-03 2 226	21440 3.9	828 3.3	702	
	262 24490 3.9	957 3.3	818	
	301 26990 4.0	1075 3.4	921	
4-03 2 305	26420 4.1	1071 3.7	969	
	345 28450 4.1	1171 3.7	1055	
5-03 2 305	25140 4.0	1013 3.5	885	
	365 27870 4.1	1139 3.6	997	
LIFE 1501	115810 4.0	4611 3.6	4174	



Conebella Farms
DON & PAM GABLE, JOSHUA, TYLER & KEVIN
337 Chestnut Tree Rd., Elverson, PA 19520
(610) 286-2967 • Cell (484) 824-2164
gable@conebellafarm.com • www.conebellafarm.com
Farm Fresh Cheese & Spreads

CONEBELLA AVENGER'S DOVE

EXCELLENT-90 2E



CONEBELLA AVENGER'S DOVE

PUREBRED AYRSHIRE 08/07/07 FEMALE
 100517707
 5-09 90 2E P8 +450

NM\$ +223
 PTA +2.71SCC +2.9PL -0.2DPR
 PTA +218M +10F +10P 52R
 PTA\$ +223CY 8/15
 PTA%
 PTAT +.70T +.01 +.02 60R 8/15
 PPA +3135M +80F +89P

CLASS	ST8	SR7	BD8	DF8	RA6	RW7	LS6	FA7
	FU7	UH8	UW8	UC8	UD6	TP5	TL7	LR8
GOLD							%	FAT % PRT
2-07	2	305	21350	3.9	822	3.1	669	
		365	25390	3.8	968	3.2	810	
4-01	2	305	25460	3.6	910	3.2	813	
		352	27340	3.6	993	3.2	881	
5-02	2	305	22660	3.1	709	3.0	688	
		337	24130	3.1	744	3.1	742	
6-03	2	305	24920	3.5	875	3.2	794	
		365	28560	3.6	1030	3.2	915	
7-06		PROJ	27886	3.8	1060	2.8	780	
LIFE		1628	117500	3.6	4265	3.2	3768	

DAUGHTER:

CONEBELLA NORMANDIN'S PEACOCK

VG-86 @ 3-04
 2-08 2 343 22520 3.7 832 3.3 749

KELLCREST AVENGER-ET

100273427
 PTA +2.73SCC +4.4PL +1.7DPR
 PTA -36M +5F -1P 96R
 PTA% +.04
 PTAT +.50T 90R 8/15
 D/AV 18298M 4.0 723F 3.1 573P 8.4T

CONEBELLA TRIDENT'S EAGLE

100224517 6-03 87

GOLD							%	FAT % PRT
2-03	2	305	14410	4.7	679	3.5	499	
		365	16670	4.8	795	3.5	584	
3-10	2	304	20470	4.2	866	3.4	698	
4-10	2	305	22320	4.1	922	3.2	717	
		365	24660	4.2	1028	3.3	805	

GRANDDAM: CONEBELLA CORSAIRE'S ORIOLE

1013824 5-07 81

GOLD							%	FAT % PRT
2-01	2	291	15450	4.3	669	3.6	554	
3-01	2	305	20930	4.1	864	3.7	768	
		318	21570	4.1	894	3.7	794	
4-02	2	305	26020	3.8	993	3.4	891	
		334	27660	3.8	1063	3.5	955	
5-03	2	305	22580	4.4	999	3.6	808	
		346	24910	4.4	1101	3.6	896	
6-04	2	262	18330	4.1	747	3.7	674	
		305	21050	4.1	870	3.7	778	
		365	23910	4.1	992	3.7	893	
LIFE		1833	120440	4.1	4992	3.6	4347	



Conebella Farms
DON & PAM GABLE, JOSHUA, TYLER & KEVIN
 337 Chestnut Tree Rd., Elverson, PA 19520
 (610) 286-2967 • Cell (484) 824-2164
 gable@conebellafarm.com • www.conebellafarm.com
 Farm Fresh Cheese & Spreads

CONEBELLA PERCY'S TIVA

VERY GOOD-86



CONEBELLA PERCY'S TIVA

94.15% AYRSHIRE	02/09/12 FEMALE	94.15%
70479086		
2-04 86	ELITE P9 +558	
NM\$ +373		
PTA +2.70SCC -2.0PL +1.0DPR		
PTA +1279M +60F +53P	48R	
PTA\$ +373CY		8/15
PTA% +.05	+.06	
PTAT +.10T	41R	8/15
PPA +2565M +167F +129P		
CLASS ST7 SR5 BD5 DF7 RA6 RW5 LS6 FA2		
FU6 UH8 UW4 UC7 UD6 TP6 TL5 LR7		
GOLD % FAT % PRT		
2-02 2 296 18290 4.1 751 3.5 637		
3-01 PROJ 19658 4.6 904 3.5 688		

RANKED #3 ON 8/15 ELITE CPI LIST

KILDARE PERCY-ET

103036515C	93%
PTA +2.64SCC -4.8PL +0.1DPR	
PTA +1666M +60F +51P	85R
PTA% -.02	-.01
PTAT -.40T	67R 8/15
D/AV 21400M 3.9 829F 3.2 679P	8.2T

CONEBELLA ORKKO'S TITO

100552513	4-06 83	ELITE	95.3%
GOLD % FAT % PRT			
2-03 2 305 16690 3.8 627 3.5 588			
306 16720 3.8 629 3.5 589			
3-03 2 277 18760 3.1 573 3.6 680			
4-02 2 296 21570 3.6 774 3.6 768			
5-03 2 279 19120 3.8 723 3.4 655			

RANKED #45 ON 8/15 ELITE CPI LIST

GRANDDAM: CONEBELLA PERCEVAL'S TONI

100437467	4-01 86	
GOLD % FAT % PRT		
1-10 2 305 21350 3.3 710 3.2 690		
318 22280 3.3 742 3.2 723		
2-11 2 266 17210 3.7 637 3.2 559		
3-10 2 271 16740 3.8 639 3.3 548		



Conebella Farms
DON & PAM GABLE, JOSHUA, TYLER & KEVIN
 337 Chestnut Tree Rd., Elverson, PA 19520
 (610) 286-2967 • Cell (484) 824-2164
 gable@conebellafarm.com • www.conebellafarm.com
 Farm Fresh Cheese & Spreads

CONEBELLA PASSION'S STARRY

GOOD PLUS-84



CONEBELLA PASSION'S STARRY

88.15% AYRSHIRE 07/22/10 FEMALE
 69458688 88.15%
 3-03 84 P9 +537

NM\$ +247
 PTA +3.08SCC -3.1PL
 PTA\$ +1806M +62F +52P 46R
 PTA\$ +247CY 8/15
 PTA% - .04 - .02
 PTAT - .10T 53R 8/15
 PPA +6070M +218F +175P

CLASS ST6 SR7 BD7 DF5 RA5 RW7 LS6 FA2
 FU6 UH4 UW5 UC6 UD5 TP6 TL4 LR5

GOLD																				
2-06	2	305	25930	3.6	938	3.0	783													
		365	30940	3.6	1127	3.1	949													
3-08	2	305	26390	3.7	987	3.2	852													
		365	29550	3.8	1121	3.2	955													

 JUST FRESH WITH 88 LBS 1ST TEST
 RANKED #7 ON 8/15 ELITE CPI LIST

PICTURED ABOVE IS DON GABLE WITH
 THE GRANDDAM, CONEBELLA REWARD'S
 STARLIGHT

ANMAR PASSELI PASSION-ET

64394220 85.56%
 PTA +3.14SCC -1.1PL +0.6DPR
 PTA +2114M +63F +53P 84R
 PTA% - .09 - .07
 PTAT - .40T 67R 8/15
 D/AV 19149M 3.8 721F 3.0 577P 8.2T

CONEBELLA DILLIGENT'S STARLA

100486032 90.75%
 5-08 85

GOLD																				
1-11	2	365	26230	4.0	1042	3.1	825													
3-03	2	350	14880	4.0	592	2.9	432													
4-08	2	295	21280	3.7	785	3.3	696													
5-06	2	290	20000	3.3	656	3.4	674													

GRANDDAM:

CONEBELLA REWARD'S STARLIGHT

100112416 11-02 89

GOLD																				
2-00	2	314	21230	3.8	798	3.1	657													
3-00	2	305	23510	4.4	1023	3.4	795													
4-01	2	311	28570	4.1	1168	3.2	921													
5-01	2	361	27180	4.1	1112	3.5	946													
6-02	2	365	35330	3.9	1380	3.2	1143													
7-03	2	365	32340	3.7	1212	3.3	1062													
8-05	2	365	34710	3.7	1299	3.1	1065													
9-10	2	365	30820	4.0	1218	3.4	1034													
11-08	2	305	19700	3.8	754	3.2	632													
12-11	2	308	18260	3.8	703	3.3	600													
LIFE	4148	307200	4.0	12219	3.3	1022														

 RECIPIENT OF 2013 & 2014 ABA LIVING
 LIFETIME PRODUCTION AWARDS



Conebella Farms
DON & PAM GABLE, JOSHUA, TYLER & KEVIN
 337 Chestnut Tree Rd., Elverson, PA 19520
 (610) 286-2967 • Cell (484) 824-2164
 gable@conebellafarm.com • www.conebellafarm.com
 Farm Fresh Cheese & Spreads

CONEBELLA REWARD'S STARLIGHT VERY GOOD-89



CONEBELLA REWARD'S STARLIGHT

PUREBRED AYRSHIRE		10/14/98 FEMALE	
100112416			
	11-02 89		P8 +406
NM\$	+131		
PTA	+3.04SCC	+0.7PL	-0.9DPR
PTA	+570M	+20F	+20P 59R
PTA\$	+131CY		8/15
PTA%			
PTAT	-1.10T	-.01	+.01 68R 8/15
PPA	+3394M	+146F	+119P
CLASS	ST7 SR7 BD8 DF9 RA7 RW7 LS7 FA3		
	FU6 UH4 UW6 UC5 UD5 TP5 TL6 LR8		
GOLD		%	FAT % PRT
2-00	2 305 20710 3.7	776 3.1	639
	314 21230 3.8	798 3.1	657
3-00	2 305 23510 4.4	1023 3.4	795
4-01	2 305 28190 4.1	1148 3.2	907
	311 28570 4.1	1168 3.2	921
5-01	2 305 24040 4.1	979 3.4	818
	361 27180 4.1	1112 3.5	946
6-02	2 305 31600 3.8	1212 3.1	985
	365 35330 3.9	1380 3.2	1143
7-03	2 305 28280 3.7	1035 3.2	909
	365 32340 3.7	1212 3.3	1062
8-05	2 305 29490 3.7	1098 3.0	889
	365 34710 3.7	1299 3.1	1065
9-10	2 305 25910 4.0	1031 3.3	850
	365 30820 4.0	1218 3.4	1034
11-08	2 305 19700 3.8	754 3.2	632
12-11	2 308 18260 3.8	703 3.3	600
LIFE	4148 307200 4.0	12219 3.3	1022

COVEY-FARMS OLYMPIC REWARD

145078	
PTA	+3.41SCC -5.3PL -2.4DPR
PTA	+30M +0F +10P 97R
PTA%	-.01 +.05
PTAT	-1.10T 93R 8/15
D/AV	18264M 3.9 705F 3.1 575P 8.1T

CONEBELLA SURPLUS' STAR

1015327 7-11 81		
GOLD		
	%	FAT % PRT
2-01	2 305 19380 3.6	701 3.2 613
3-04	2 305 23210 3.7	866 3.2 743
5-00	2 305 27600 3.8	1053 3.0 829
6-03	2 305 28100 3.5	991 2.9 810
7-04	2 305 24030 4.0	971 3.2 759
	321 24660 4.1	1002 3.2 783
8-04	2 305 21560 3.1	676 2.8 601
	365 24770 3.2	794 2.8 705
9-07	2 305 17370 3.5	605 3.0 523
	330 18520 3.5	646 3.0 562
LIFE	3024 204520 3.6	7464 3.1 6346

GRANDDAM: CONEBELLA MOZART'S SPARKLE

993401		
DHIR		
	%	FAT % PRT
2-00	2 305 16800 3.8	635 3.2 542
3-02	2 207 14340 3.2	458 3.4 484

PICTURED ABOVE IS DON GABLE WITH CONEBELLA REWARD'S STARLIGHT

RECIPIENT OF 2013 & 2014 ABA LIVING LIFETIME PRODUCTION AWARDS



Conebella Farms
DON & PAM GABLE, JOSHUA, TYLER & KEVIN
 337 Chestnut Tree Rd., Elverson, PA 19520
 (610) 286-2967 • Cell (484) 824-2164
 gable@conebellafarm.com • www.conebellafarm.com
 Farm Fresh Cheese & Spreads

LONE BIRCH D WHAM DALLAS

EXCELLENT-91



LONE BIRCH D WHAM DALLAS

97.68% AYRSHIRE 09/23/10 FEMALE
 100608979 97.68%
 4-06 91 P5 +490
 NM\$ -88
 PTA +0F +0P 0R
 PTA\$ -88CY 8/15
 PTAT +1.00T 42R 8/15
 CLASS ST9 SR8 BD9 DF6 RA4 RW9 LS6 FA4
 FU5 UH9 UW7 UC9 UD8 TP8 TL3 LR8
 3-10 2 305 18686 3.8 710 3.3 621
 336 20796 3.7 780 3.3 698

3RD FALL CALF - 2011 EASTERN STATES NATIONAL
 2ND FALL YRLG - 2012 EASTERN STATES NATIONAL
 2ND FALL YRLG - 2012 EASTERN STATES NAT'L JR
 1ST FALL YEARLING - 2012 CENTRAL NATIONAL JR
 3RD SR 2 - 2013 SOUTHERN NATIONAL JR
 3RD SR 2 - 2013 SOUTHERN NATIONAL
 1ST SR 3 - 2014 EASTERN STATES NAT'L
 1ST SR 3-YEAR-OLD - 2014 INTERNATIONAL
 INTERMEDIATE CHAMPION - 2014 INTERNATIONAL
 RES GRAND CHAMPION - 2014 INTERNATIONAL
 ALL-AMERICAN SR 3-YEAR-OLD - 2014

DALLAS IS NOW OWNED BY LONE BIRCH
 AYRSHIRES, BLUE SPRUCE FARM & ALEX
 MCCAIG

FAMILY-AF-AYR DOUBLWHAMMY-ET

100516902 95.37%
 PTA +3.05SCC -0.5PL -0.1DPR
 PTA -329M -3F -6P 84R
 PTA% +.04 +.02
 PTAT +1.20T 77R 8/15
 D/AV 19108M 4.0 764F 3.2 610P 8.6T

LONE BIRCH DESTINY

100499498
 2ND JR 3-YEAR-OLD - 2009 SOUTHERN NAT'L JR
 RES INT CHAMP - 2009 SOUTHERN NATIONAL JR
 2ND 4-YEAR-OLD - 2010 SOUTHERN NATIONAL JR
 3RD 4-YEAR-OLD - 2010 SOUTHERN NATIONAL
 1ST AGED COW - 2012 EASTERN STATES NAT'L JR
 1ST AGED COW - 2012 CENTRAL NATIONAL JR

GRANDDAM: LONE-BIRCH DELIGHT

100366691 3-02 91
 2ND SUMMER YRLG - 2004 EASTERN STATES NAT'L
 1ST JR 3 - 2006 EASTERN STATES NATIONAL
 INT CHAMPION - 2006 EASTERN STATES NAT'L
 RES GRAND - 2006 EASTERN STATES NAT'L
 3RD JR 3-YEAR-OLD - 2006 SOUTHERN NATIONAL
 NOM ALL-AMERICAN JR 3-YEAR-OLD - 2006

Lone Birch Ayrshires

BILL WOODIS FAMILY

19 Forest Street, North Brookfield, MA 01535

(508) 735-1720

Amy Woodis: (508) 864-5275 • Email: amywoodis@hotmail.com

ALLEGRO BURDETTE STARSHIP VERY GOOD-86



ALLEGRO BURDETTE STARSHIP

98.84% AYRSHIRE 08/16/12 FEMALE
11087978C
2-03 86
DHI % FAT % PRT
2-02 2 305 19660 3.8 747 2.8 549
307 19740 3.8 751 2.8 552

HAVE 3 FOREVER SCHOON PREDATOR-ET
PREGNANCIES, DUE BACK FOR NEXT SUMMER

OWNED IN PARTNERSHIP WITH LONE BIRCH
AYRSHIRES

PALMYRA TRI-STAR BURDETTE-ET

100419568
PTA +2.80SCC +1.4PL +0.8DPR
PTA +429M +14F +18P 98R
PTA% -.01 +.02
PTAT +1.80T 97R 8/15
D/AV 19799M 3.9 774F 3.2 628P 8.5T

BRIXHAM POKER ENPLEEZER

9905055 6-08 91 2E
DHI % FAT % PRT
2-09 2 305 16305 4.3 697 3.3 540
3-09 2 305 20712 4.2 862 3.4 701
4-10 2 305 20655 4.1 842 3.2 666

GRANDDAM: BRIXHAM CALIMERO SIENNA

7939680 6-02 91 3E
GOLD % FAT % PRT
2-05 2 279 12604 4.3 536 3.3 417
4-02 2 305 13799 4.2 578 3.5 487
5-03 2 275 13724 4.0 547 3.3 456

Blue-Spruce Farm
EUGENE & NATHAN AUDET

1796 VT RTE 22A
Bridport VT 05734

(802-758-2179) • Nathan cell: (802-989-0649) • Eugene home: (802-753-2359)
Email: bsf@gmavt.net

CR-FARM JULIO'S NERISSA EXCELLENT-91

CR-FARM JULIO'S NERISSA

PUREBRED AYRSHIRE 01/30/08 FEMALE
100516304

6-05 91 P9 +440

NM\$ +125
PTA +3.04SCC +0.4PL +0.6DPR
PTA +922M +12F +20P 38R
PTA\$ +125CY 8/15
PTA% -.12 -.05
PTAT -.10T 53R 8/15
PPA +4153M +83F +102P

CLASS	ST7	SR6	BD8	DF9	RA5	RW7	LS5	FA6
	FU3	UH7	UW6	UC5	UD4	TP9	TL5	LR8
GOLD			%	FAT	%	PRT		
1-11	2	305	17020	3.8	653	3.0	513	
		365	19310	3.9	752	3.1	593	
3-01	2	280	22900	3.6	822	2.9	675	
4-00	2	299	23720	3.7	876	2.9	695	
5-00	2	282	23030	3.7	842	2.9	675	
5-11	2	280	23820	3.6	862	2.9	683	
LIFE	1509	112890	3.7	4158	2.9	3325		

SON: CR-FARM SANTA'S NEVILLE
SEMEN AVAILABLE
HIS OLDEST DAUGHTER:
BLUE SPRUCE NEVILLE 11370
2ND, 2015 VT FUTURITY
ME 19,265M 770F 601P

WILSHORE JULIO-ET

100442254

PTA +3.21SCC -2.2PL +0.3DPR
PTA +808M +1F +15P 57R
PTA% -.16 -.05
PTAT -.10T 45R 8/15
D/AV 17206M 3.8 650F 3.0 520P 8.3T

CR-FARM MAGIC NEATLY

100422380 4-00 84

GOLD			%	FAT	%	PRT
2-05	2	305	17360	4.0	700	2.9 505
		365	19890	4.1	810	3.0 595
3-11	2	277	15220	4.2	644	3.1 468
4-10	2	305	18880	4.3	815	3.2 600
		338	20180	4.3	873	3.2 648
6-00	2	305	16390	4.2	686	3.1 515
		309	16510	4.2	691	3.1 519
7-00	2	305	17590	4.1	725	3.1 554
		365	19570	4.1	800	3.2 621
8-04	2	305	19370	4.6	893	2.9 568
		365	21420	4.6	987	3.0 638
LIFE	2194	117530	4.3	5034	3.1 3670	

GRANDDAM: CR-FARM M LEGUE NICELY

100249075 3-07 83

GOLD			%	FAT	%	PRT
2-03	2	365	21080	4.2	891	3.1 658
3-06	2	334	17600	4.2	736	3.1 553
4-07	2	358	18080	4.6	825	3.1 554

CR Farm
THE HUNTINGTONS
3661 Route 5 North, Newbury, VT 05051
Lin cell: (802) 356-2710 • Gordon cell: (802) 356-7418

OLD-BANKSTON JC MALIBU-ET



OLD-BANKSTON JC MALIBU-ET

PUREBRED AYRSHIRE 07/12/14 FEMALE
72916635

P7 +453

NM\$ +103

PTA +0F +0P 0R

PTA\$ +103CY 8/15

1ST SUMMER YEARLING & HM JR CHAMPION,
2015 OH SPRING NATIONAL
1ST SUMMER YEARLING & JR CHAMPION,
2015 OH STATE FAIR
1ST SUMMER YEARLING & JR CHAMPION,
2015 KY STATE FAIR

FOREVER SCHOON PREDATOR-ET

11119921C

PTA +2.92SCC +0.3PL -0.6DPR

PTA +591M +39F +19P 48R

PTA% +.08

PTAT +.60T 42R 8/15

STILLMORE-LEXY MIDORI-ET

100556021 3-11 92

DHI % FAT % PRT

3-11 2 305 19500 4.8 945 3.2 620

321 20310 4.8 978 3.2 647

1ST SR 3-YEAR-OLD - 2012 INTERNATIONAL
ALL-AMERICAN (TIE) SR 3-YEAR-OLD - 2012

MINERVA'S SHOW WINNINGS:

1ST SUMMER YEARLING - 2003 CENTRAL NATIONAL
ALL-AMERICAN SUMMER YEARLING - 2003
1ST JR 2-YEAR-OLD - 2004 CENTRAL NATIONAL
UNAN ALL-AMERICAN JR 2-YEAR-OLD - 2004
1ST JR 3-YEAR-OLD - 2005 CENTRAL NATIONAL
GRAND CHAMPION - 2005 CENTRAL NATIONAL
ALL-AMERICAN JR 3-YEAR-OLD - 2005
1ST 4-YEAR-OLD - 2006 CENTRAL NATIONAL
GRAND CHAMPION - 2006 CENTRAL NATIONAL
UNAN ALL-AMERICAN 4-YEAR-OLD - 2006
HM ALL-AMERICAN 5-YEAR-OLD - 2007
1ST AGED COW - 2008 CENTRAL NATIONAL
SENIOR CHAMPION - 2008 CENTRAL NATIONAL
GRAND CHAMPION - 2008 CENTRAL NATIONAL
ALL-AMERICAN AGED COW - 2008
NOM ALL-AMERICAN AGED COW - 2009

GRANDDAM: VALEVIEW BBK MINERVA

100292194 6-06 96 2E

DHI

1-11 2 305 20209 4.1 834 3.5 707

345 22874 4.1 943 3.5 801

3-01 2 319 30926 5.5 1699 3.3 1019

3-01 2 305 30029 5.5 1644 3.3 984

4-01 2 305 31187 4.8 1505 3.4 1048

365 35301 4.7 1653 3.4 1191

5-09 2 305 34142 5.9 2003 3.1 1059

365 38236 5.7 2162 3.2 1216

9-04 2 288 22080 4.2 921 3.4 744

LIFE 2478 219766 5.0 10924 3.3 7296

Shady View Farms
MICHELLE & MELISSA DOWNERD

994 Newmans Cardington Rd.

Prospect, OH 43342

Michelle: (740) 816-0823 • Melissa: (740) 816-3829

downerd.3@gmail.com

FOUR-HILLS TDENT SNOOPY 2634

EXCELLENT-93 2E



FOUR-HILLS TDENT SNOOPY 2634

PUREBRED AYRSHIRE 03/03/09 FEMALE
 66535410 5-04 93 2E P8 +429
 NM\$ -35
 PTA +3.08SCC -2.0PL -1.8DPR
 PTA +196M +0F +10P 54R
 PTA\$ -35CY 8/15
 PTA%
 PTAT +.80T 53R 8/15
 PPA +3492M +95F +100P
 CLASS ST5 SR6 BD7 DF9 RA5 RW7 LS5 FA6
 FU7 UH8 UW8 UC7 UD5 TP7 TL6 LR8
 GOLD % FAT % PRT
 2-02 3 305 21610 3.8 828 3.2 681
 317 22130 3.8 849 3.2 701
 3-03 2 305 23890 3.8 902 3.8 914
 365 28260 3.8 1072 3.8 1065
 5-00 3 305 33100 2.6 856 3.0 1006
 365 40030 2.9 1174 3.1 1232

 NOM ALL-AMERICAN SPRING CALF - 2009
 JR ALL-AMERICAN SPRING CALF - 2009
 UNAN ALL-AMERICAN JR 2-YEAR-OLD - 2011
 JR ALL-AMERICAN JR 2-YEAR-OLD - 2011
 INTERMEDIATE CHAMPION - 2012 INTERNATIONAL
 SENIOR CHAMPION - 2012 CENTRAL NATIONAL JR
 GRAND CHAMPION - 2012 CENTRAL NATIONAL JR
 UNAN ALL-AMERICAN JR 3-YEAR-OLD - 2012
 UNAN JR ALL-AMERICAN JR 3-YEAR-OLD - 2012
 ALL WORLD 3-YEAR-OLD - 2012
 HM ALL-AMERICAN 4-YEAR-OLD - 2013
 JR ALL-AMERICAN 4-YEAR-OLD - 2013
 NOM ALL-AMERICAN 5-YEAR-OLD - 2014
 RES JR ALL-AMERICAN 5-YEAR-OLD - 2014
 GRAND CHAMPION - 2015 MID-ATLANTIC NATIONAL
 RES GRAND - 2015 MID-ATLANTIC NAT'L JR

ARROSSAN EV KATES TRIDENT *TF

144136 12-03 95 EEEE
 PTA +3.14SCC -2.1PL -1.9DPR
 PTA -181M +8F +3P 99R
 PTA% +.08 +.05
 PTAT +.40T 98R 8/15
 D/AV 18388M 3.9 723F 3.2 585P 8.4T

FOUR-HILLS NOLAN SNOOP

100414086
 GOLD % FAT % PRT
 3-02 2 304 22480 4.2 940 3.0 666

GRANDDAM: FOUR-HILLS CLINTON SNOOPY

100388192 3-01 89

SNOOPY'S DAUGHTER:

FOUR-HILLS ABUSH SAMMY 3559, EX-91

3-00 3 305 30160
 1ST JR 2-YEAR-OLD - 2013 INTERNATIONAL
 1ST JR 2-YEAR-OLD - 2013 CENTRAL NATIONAL JR
 SENIOR CHAMPION - 2013 CENTRAL NATIONAL JR
 GRAND CHAMPION - 2013 CENTRAL NATIONAL JR
 1ST JR 2-YEAR-OLD - 2013 SOUTHERN NATIONAL
 INT CHAMPION - 2013 SOUTHERN NATIONAL
 RES GRAND CHAMPION - 2013 SOUTHERN NATIONAL
 UNAN ALL-AMERICAN JR 2-YEAR-OLD - 2013
 UNAN JR ALL-AMERICAN JR 2-YEAR-OLD - 2013
 1ST JR 3-YEAR-OLD - 2014 CENTRAL NATIONAL JR
 JR ALL-AMERICAN JR 3-YEAR-OLD - 2014

Four Hills Farm

THE HILL FAMILY

722 Burpee Rd.

Bristol, VT 05443

(802) 453-5212 • Kevin cell: (802) 363-8841

MAGIC-MEADOWS BBBK ALEXUS

EXCELLENT-93 3E



MAGIC-MEADOWS BBBK ALEXUS

PUREBRED AYRSHIRE 09/03/07 FEMALE
 100507380 7-07 93 3E P8 +390
 NM\$ -109
 PTA +3.12SCC +0.5PL
 PTA -548M -40F -3P 56R
 PTA\$ -109CY 8/15
 PTA%
 PTAT +1.20T 56R 8/15
 PPA +2855M +35F +138P
 CLASS ST6 SR5 BD7 DF7 RA4 RW6 LS8 FA6
 FU5 UH5 UW6 UC6 UD6 TP6 TL2 LR6
 GOLD % FAT % PRT
 4-06 2 305 26790 3.5 939 4.3 1158
 365 30510 3.6 1084 4.3 1307
 5-09 3 251 18600 2.6 486 3.5 651
 7-00 3 272 30060 3.3 994 3.5 1044

RES JR CHAMPION - 2008 EASTERN STATES NAT'L JR
 RES JR CHAMPION - 2009 SOUTHERN NATIONAL
 RES ALL-AMERICAN FALL CALF - 2008
 RES JR ALL-AMERICAN FALL CALF - 2008
 RES ALL-AMERICAN FALL YEARLING - 2009
 SENIOR CHAMPION - 2010 CENTRAL NATIONAL JR
 GRAND CHAMPION - 2010 CENTRAL NATIONAL JR
 INT CHAMPION - 2010 SOUTHERN NATIONAL JR
 HM ALL-AMERICAN SR 2-YEAR-OLD - 2010
 UNAN JR ALL-AMERICAN SR 2-YEAR-OLD - 2010
 RES SR CHAMPION - 2012 CENTRAL NATIONAL JR
 RES GRAND CHAMPION - 2012 CENTRAL NAT'L JR
 UNAN ALL-AMERICAN 4-YEAR-OLD - 2012
 UNAN JR ALL-AMERICAN 4-YEAR-OLD - 2012
 RES ALL-AMERICAN 5-YEAR-OLD - 2013
 UNAN JR ALL-AMERICAN 5-YEAR-OLD - 2013
 RES SR CHAMPION - 2014 CENTRAL NATIONAL JR
 RES GRAND CHAMPION - 2014 CENTRAL NAT'L JR
 RES ALL-AMERICAN AGED COW - 2014
 JR ALL-AMERICAN AGED COW - 2014
 1ST 100,000 LB COW - 2015 MID-ATLANTIC NAT'L
 1ST 100,000 LB COW - 2015 MID-ATLANTIC NAT'L JR

BLACKADDAR B B KELLOGG

777850C
 PTA +3.13SCC -0.1PL -0.3DPR
 PTA -910M -43F -20P 98R
 PTA% -0.04 +0.05
 PTAT +1.00T 97R 8/15
 D/AV 17808M 3.9 688F 3.2 569P

MAGIC-MEADOWS SAV. ALEXANDRIA

100323793 4-04 90
 GOLD % FAT % PRT
 2-01 2 258 10970 4.5 491 3.2 355
 3-00 2 270 12910 3.9 507 3.1 406
 4-02 2 279 14360 4.3 618 3.3 470

1ST SUMMER YEARLING - 2004 CENTRAL NAT'L
 JUNIOR CHAMPION - 2004 CENTRAL NAT'L
 UNAN ALL-AMERICAN SUMMER YEARLING - 2004

GRANDDAM: MAGIC-MEADOWS BBBK ALASKA

100040948
 DHI % FAT % PRT
 4-06 3 305 16850 4.3 730 3.1 527
 337 17410 4.4 760 3.2 550
 5-09 3 305 13980 4.5 629 3.2 452
 338 14750 4.5 664 3.3 480
 6-09 3 305 11720 4.3 500 3.1 365

Four Hills Farm

THE HILL FAMILY

722 Burpee Rd.

Bristol, VT 05443

(802) 453-5212 • Kevin cell: (802) 363-8841

MAPLECREST POTTER GOLD MEDAL EXCELLENT-91



MAPLECREST POTTER GOLD MEDAL

PUREBRED AYRSHIRE 10/19/10 FEMALE
68999516 4-02 91 P- +464
NM\$ +127
PTA +0F +0P 0R
PTA\$ +127CY 8/15
PTAT +.70T 45R 8/15
CLASS ST6 SR5 BD7 DF7 RA4 RW5 LS5 FA7
FU7 UH7 UW6 UC5 UD5 TP6 TL3 LR7

NOM ALL-AMERICAN FALL YEARLING - 2012
NOM ALL-AMERICAN SR 2-YEAR-OLD - 2013
1ST SR 3-YEAR-OLD - 2014 SOUTHERN NATIONAL
INTERMEDIATE CHAMP - 2014 SOUTHERN NATIONAL
RES GRAND CHAMPION - 2014 SOUTHERN NATIONAL
RES ALL-AMERICAN SR 3-YEAR-OLD - 2014

CALVES COMING!

PREGNANCIES BY DREAMER, GENTLEMAN, DE
LA PLAINE VICKING, DEER HILL FRANCIS

DES PRAIRIES POTTER

100512296C
PTA +2.82SCC -0.1PL -0.9DPR
PTA -228M +15F -4P 95R
PTA% +.13 +.02
PTAT +.10T 90R 8/15
D/AV 19211M 4.1 783F 3.2 611P 8.5T

PALMYRA TRISTAR R GISELLE-T

65003778
GOLD % FAT % PRT
2-07 2 305 23660 3.6 852 3.0 702
321 24550 3.6 891 3.0 727

2ND SR 2-YEAR-OLD - 2009 INTERNATIONAL

GRANDDAM: PALMYRA RAVEN S. GINGER

100330199 6-03 89
GOLD % FAT % PRT
1-11 2 305 23330 3.0 693 3.0 703
365 27710 3.0 841 3.0 842
3-04 2 305 22580 3.2 727 3.0 681
334 23170 3.2 749 3.0 701
4-06 2 305 32700 4.6 1515 2.9 957
365 35760 4.5 1626 2.9 1052
5-11 2 305 19880 4.0 805 2.9 585
365 22720 4.0 899 2.9 670
7-03 2 305 29210 4.4 1299 2.9 839
365 33490 4.3 1453 2.9 976
LIFE 2484 166320 3.8 6358 3.0 4994

ALL-AMERICAN FALL CALF - 2004
JR ALL-AMERICAN FALL CALF - 2004
RES INT CHAMPION - 2005 MID-ATLANTIC NAT'L
INT CHAMPION - 2005 MID-ATLANTIC NAT'L JR
GRAND CHAMPION - 2005 MID-ATLANTIC NAT'L JR
UNAN ALL-AMERICAN FALL YRLG IN MILK - 2005
UNAN JR ALL-AMERICAN FALL YRLG IN MILK - 2005

Lazy M Farm
MICHAEL MAIER
4426 Countryside Lane
Stitzer, WI 53825
(608) 732-8275

LEGACY-LANE D WHAM JOURNEY



LEGACY-LANE D WHAM JOURNEY

97.68% AYRSHIRE 03/08/14 FEMALE
 100675948 97.68%
 P- +403
 NM\$ -126
 PTA +0F +0P 0R
 PTA\$ -126CY 8/15

1ST SPRING CALF - 2014 EASTERN STATES NAT'L
 1ST SPRING CALF - 2014 INTERNATIONAL
 UNAN ALL-AMERICAN SPRING CALF - 2014
 UNAN ALL-CANADIAN SPRING CALF - 2014
 ALL WORLD CALF UP TO 6 MONTHS - 2014
 1ST SPRING YEARLING - 2015 NY SPRING SHOW

WATCH FOR MORE FROM
 THIS EXCITING HEIFER!

FAMILY-AF-AYR DOUBLWHAMMY-ET

100516902 95.37%
 PTA +3.05SCC -0.5PL -0.1DPR
 PTA -329M -3F -6P 84R
 PTA% +.04 +.02
 PTAT +1.20T 77R 8/15
 D/AV 19108M 4.0 764F 3.2 610P 8.6T

LEGACY-LANE CHIEF JERRICA

100557639 6-00 92
 DHI % FAT % PRT
 3-11 2 257 10480 3.9 410 3.2 340
 5-07 2 243 15950 4.2 667 3.1 490

2ND SUMMER YRLG - 2009 EASTERN STATES NAT'L
 2ND JR 2 - 2010 EASTERN STATES NATIONAL
 3RD JR 3 - 2011 EASTERN STATES NATIONAL

GRANDDAM: LEGACY-LANE AVENGER JEZEBEL

100400852 4-10 91
 GOLD % FAT % PRT
 3-07 3 264 17630 4.6 810 3.2 571

2ND FALL CALF - 2005 EASTERN STATES NAT'L JR
 3RD SR 3-YEAR-OLD - 2008 EASTERN STATES NAT'L
 3ND 4-YEAR-OLD - 2009 EASTERN STATES NAT'L

Legacy Lane Farm
STEVE, MARY & ZACHARY WOODIS
 82 Northwest Rd., Spencer, MA 01562
 (508) 885-4316
 Email: legacylanefarm@hotmail.com

LBV RAMIUS RAMIE LAINE

EXCELLENT-90



LBV RAMIUS RAMIE LAINE

PUREBRED AYRSHIRE 03/06/10 FEMALE
 69518545 4-02 90 P7 +416
 NM\$ +40
 PTA +3.10SCC +0.6PL +1.3DPR
 PTA -20M +4F -2P 46R
 PTA\$ +40CY 8/15
 PTA%
 PTAT +.40T .59R 8/15
 PPA -655M -21F -20P
 CLASS ST5 SR5 BD6 DF7 RA4 RW5 LS5 FA6
 FU6 UH6 UW4 UC6 UD7 TP6 TL3 LR8
 GOLD % FAT % PRT
 3-11 2 305 19510 4.0 788 3.3 645
 360 21390 4.2 903 3.4 725

 NOM JR ALL-AMERICAN SPRING YEARLING - 2011

GALNEY-EPC GALANT RAMIUS

100216624
 PTA +3.51SCC +0.3PL +1.9DPR
 PTA +4M -2F +3P 96R
 PTA% -.01 +.02
 PTAT +.90T 94R 8/15
 D/AV 19205M 3.9 743F 3.1 604P 8.5T

COVEY-FARMS MODEM KLASSI LASSI

100548594 4-11 86
 GOLD % FAT % PRT
 2-01 3 316 18140
 3-02 3 305 20910 4.3 903 3.0 637

GRANDDAM: COVEY-FARMS FLINT KAREN

100300246 3-08 85
 GOLD % FAT % PRT
 2-08 2 305 22020 3.5 781 2.7 602
 3-11 2 305 21370 3.6 772 2.8 599
 330 22070 3.6 798 2.8 623
 5-00 2 305 21720 3.7 810 2.6 572
 365 24020 3.7 893 2.7 645
 6-07 2 305 26500 3.3 865 2.7 722
 365 29730 3.3 981 2.7 815
 7-10 2 305 23760 3.5 843 2.7 634
 365 26560 3.6 959 2.7 725
 LIFE 1939 131960 3.6 4721 2.8 3655

Shimmer-Ayr

LEANNE VANDERLAAN

21360 CR EW 181

Frederick, OK 73524

(508) 335-5932 • Cell: (580) 418-8741

Email: leannevanderlaan@yahoo.com

MAINSTREAM REAL BETHANY

EXCELLENT-92



MAINSTREAM REAL BETHANY

PUREBRED AYRSHIRE 03/09/10 FEMALE
 100588190 4-06 92 P9 +453
 NM\$ +217 NATIONAL CLASS LEADER
 PTA +2.95SCC +2.3PL
 PTA +353M +32F +3P 47R
 PTA\$ +217CY 8/15
 PTA%
 PTAT +.60T 43R 8/15
 PPA +1733M +162F +21P
 CLASS ST6 SR5 BD6 DF7 RA4 RW6 LS5 FA6
 FU6 UH6 UW6 UC4 UD5 TP6 TL2 LR7
 GOLD % FAT % PRT
 2-02 2 305 22900 5.0 1137 2.9 673
 335 24450 5.0 1229 3.0 723
 3-03 2 305 31990 4.7 1510 3.1 978
 365 37870 4.7 1777 3.1 1173
 4-05 2 305 38550 4.7 1822 2.8 1081
 365 43520 4.7 2063 2.8 1233
 LIFE 1074 106600 4.8 5099 3.0 3155

2014 ABA AYRSHIRE TROPHY WINNER FOR
 MILK PRODUCTION

2014 ABA MAURICE BENSON PROTEIN AWARD
 WINNER FOR 3-YEAR-OLD

HERD WON 2014 FRENCH TROPHY

PALMYRA TRI-STAR REALITY

100369452
 PTA +2.94SCC +1.6PL +0.1DPR
 PTA +685M +34F +9P 95R
 PTA% +.04 -.07
 PTAT +.60T 92R 8/15
 D/AV 20547M 4.0 825F 3.1 635P 8.5T

BIRGHDALE COUNTESS 111

100546181 7-03 90
 GOLD % FAT % PRT
 2-00 2 305 24970 4.7 1180 3.2 794
 342 27280 4.9 1336 3.2 872
 3-01 2 305 25930 5.1 1314 3.3 867
 337 27240 5.0 1373 3.4 917
 4-01 2 305 27880 4.0 1107 3.2 879
 361 30600 4.0 1210 3.2 972
 5-07 2 305 31640 3.6 1130 3.0 941
 365 36250 3.6 1298 3.0 1088
 LIFE 1420 122290 4.3 5253 3.2 3880

BETHANY'S DAUGHTER: MAINSTREAM BUR BAILEY

GP-84 @ 1-10
 FRESH 7 DAYS WITH 106 LBS

Mainstream Ayrshires

MARK KORTUS

2350 Main St.

Lynden WA 98264

(360-354-5266)

Email: mainstrm1@hotmail.com

VAN-DE ORKKO CAITLIN CORKY

EXCELLENT-92 2E



PICTURED FROM LEFT: CORKY'S FIRST MILKING DAUGHTERS

ARIZONA, EX-90, #1 ELITE CPI COW 8/15 - RECORDS TO 24,000M 4.7%F 3.9%P
 CAMILLE, VG-88 @ 2-10, #8 ELITE CPI COW 8/15 - RECORDS TO 20,000M 4.4%F 3.6%P
 CHERRY - 1ST LACTATION PROJ TO 19,289M 4.0%F 3.2%
 CLEOPATRA - 91 LBS FIRST TEST, PROJ TO 22,525M 4.1%F 2.7%P

VAN-DE ORKKO CAITLIN CORKY

95% AYRSHIRE 04/21/08 FEMALE 95%
 100545377
 6-03 92 2E ELITE P9 +556
 NM\$ +452
 PTA +2.81SCC +1.8PL +1.8DPR
 PTA +1162M +50F +48P 55R
 PTA\$ +452CY 8/15
 PTA%
 PTAT +.70T +.02 +.06
 PPA +5217M +229F +182P 8/15
 CLASS ST9 SR9 BD9 DF9 RA7 RW8 LS7 FA3
 FU3 UH6 UW9 UC9 UD2 TP6 TL8 LR7
 DHI % FAT % PRT
 1-11 2 305 22970 3.9 903 3.2 729
 349 26100 3.9 1014 3.2 834
 3-01 2 305 25500 4.3 1097 3.4 859
 4-03 2 305 26990 3.9 1055 3.4 908
 5-10 2 305 31950 4.1 1324 3.2 1027
 355 34150 4.2 1432 3.3 1117
 LIFE 1480 121930 4.1 5033 3.3 4055

 RANKED #4 ON 8/15 ELITE CPI LIST
 2ND JR 2-YEAR-OLD - 2010 INTERNATIONAL
 NOM ALL-AMERICAN JR 2-YEAR-OLD - 2010

STILL BEING FLUSHED!

PUROLAN ORKKO FI

41531C 90%
 PTA +2.83SCC +2.7PL +3.7DPR
 PTA +1055M +31F +52P 98R
 PTA% -.05 +.09
 PTAT -.60T 83R 8/15
 D/AV 22970M 3.8 882F 3.2 737P 8.3T

S&M-AYR TRIDENT CHERRY CAITLYN

100191064 4-00 90
 GOLD % FAT % PRT
 1-11 2 304 18830 3.8 707 2.9 541
 2-11 2 305 18860 3.6 684 2.9 555
 330 19630 3.6 716 3.0 583
 7-01 2 305 19560 3.8 734 2.8 540
 365 21160 3.7 792 2.8 592
 3-11 2 305 21600 4.0 857 3.0 645
 345 22290 4.0 889 3.0 669
 5-00 2 305 20330 4.0 806 2.9 587
 350 21560 4.0 862 2.9 629
 6-02 2 305 22480 3.7 824 2.7 617
 307 22560 3.7 827 2.7 619
 LIFE 2024 126490 3.8 4810 2.9 3649

GRANDDAM: S&M-AYR BOYS CHERRY

100008685 4-03 89
 GOLD % FAT % PRT
 3-03 2 305 17140 4.2 712 3.2 549
 312 17330 4.2 722 3.2 556

7 Oaks Dairy

MARGARET HAZELTINE
 2828 Kessler Road
 Janesville, WI 53548
 (608) 756-2913

ROB & TIFFANY HAZELTINE
 3851 Braemore St.
 Janesville, WI 53548
 Cell (608) 295-3650 • 7oaksdairy@gmail.com

ULLMSTAR LIL TREASURE-ET



ULLMSTAR LIL TREASURE-ET

95.37% AYRSHIRE 09/01/14 FEMALE
 69764274 95.37%
 P5 +432
 NM\$ +16
 PTA +0F +0P 0R
 PTA\$ +16CY 8/15

1ST FALL CALF, 2015 WI STATE SHOW

WE'RE EXCITED TO DEVELOP THESE
 GENETICS IN OUR HERD!

MARGOT CALIMERO

10310847C 90.75%
 PTA +3.03SCC -0.7PL +0.7DPR
 PTA -227M +5F +2P 96R
 PTA% +.07 +.05
 PTAT +1.10T 94R 8/15
 D/AV 19379M 4.0 766F 3.2 619P 8.6T

DON HAVEN BBBK TIPSY

100590612 5-01 92 2E
 GOLD % FAT % PRT
 2-03 3 305 24400 3.6 876 2.9 696
 317 25360 3.6 919 2.9 726
 3-03 3 305 29700 4.9 1457 2.9 875

1ST SPRING CALF - 2010 SOUTHERN NATIONAL
 NOM ALL-AMERICAN SPRING CALF - 2010
 1ST JR 2-YEAR-OLD - 2012 INTERNATIONAL
 RES INT CHAMPION - 2012 INTERNATIONAL
 UNAN ALL-AMERICAN JR 2-YEAR-OLD - 2012
 2ND JR 3-YEAR-OLD - 2013 INTERNATIONAL
 RES ALL-AMERICAN JR 3-YEAR-OLD - 2013

GRANDDAM: DON HAVEN REALITY TOPSY

7776259C VG-85 CAN
 5-04 2 365 26292 4.4 1153 3.4 880
 6-09 2 315 24518 5.0 1219 3.2 796
 LIFE 107949 4.7 5042 3.3 3609

7 Oaks Dairy

MARGARET HAZELTINE
 2828 Kessler Road
 Janesville, WI 53548
 (608) 756-2913

ROB & TIFFANY HAZELTINE
 3851 Braemore St.
 Janesville, WI 53548
 Cell (608) 295-3650 • 7oaksdairy@gmail.com

LA SAPINIÈRE CHELYO

VERY GOOD-87



LA SAPINIÈRE CHELYO

107791609C 2-08 87 90.29% AYRSHIRE
 2-02 2 192 16812 5.0 840 3.5 589
 RIP

HER PATRIOT SON, LA SAPINIÈRE
 CHELYOTE, IS BEING SAMPLED BY SEMEX
 #46 GLPI BULL
 GLPI +2387M +127F +101P

OWNED BY FERME NORMAND BRILLIANT &
 FAMILY & ROB HAZELTINE

KAMOURASKA VOLVO-ET

106530705C 87.22%
 PTA +3.02SCC +0.2PL
 PTA +661M +38F +34P 73R
 PTA% +.07
 PTAT +.60T 60R 8/15

LA SAPINIÈRE BLANCHELYNO

103590208C 5-09 91 2E 93.35%
 1-11 2 305 16588 4.0 668 3.5 578
 2-11 2 305 21932 3.9 860 3.4 739
 4-05 2 305 22525 3.6 814 3.3 747
 5-06 2 305 18254 3.8 690 3.4 617

GRANDDAM: LA SAPINIÈRE BLANCHELYNE-ET

102568297C 2-01 81 95.95%
 1-10 2 305 16372 4.5 741 3.6 586
 2-11 2 305 18144 4.3 772 3.6 659

7 Oaks Dairy

MARGARET HAZELTINE

2828 Kessler Road
 Janesville, WI 53548
 (608) 756-2913

ROB & TIFFANY HAZELTINE

3851 Braemore St.
 Janesville, WI 53548
 Cell (608) 295-3650 • 7oaksdairy@gmail.com

YELLOW BRIAR J BEVERLEY

VERY GOOD-88



YELLOW BRIAR J BEVERLEY

PUREBRED AYRSHIRE 05/17/12 FEMALE
100666205

P6 +438

NM\$	+88					
PTA		+0F	+0P		0R	
PTA\$	+88CY				8/15	
GOLD		%	FAT %	PRT		
2-03	2 305	21230	4.2	886 3.4	712	
	326	22630	4.2	945 3.4	764	

NOM ALL-AMERICAN SPRING YEARLING - 2013
NOM ALL-CANADIAN JR 2, 2014

FANCY 9/14 MAVERICK
(PRIME X CALIMERO MEGAN)

DUE THIS FALL & HOUSED AT
BUDJON FARMS

PALMYRA TRI-STAR BURDETTE-ET

100419568

PTA	+2.80SCC	+1.4PL	+0.8DPR		
PTA	+429M	+14F	+18P	98R	
PTA%		-.01	+.02		
PTAT	+1.80T		97R	8/15	
D/AV	19799M 3.9	774F 3.2	628P 8.5T		

YELLOW BRIAR JOLENE

9874931C 3-08 86

2-07	2 323	14277	4.0	567 3.3	476
3-07	2 304	15957	3.9	626 3.3	522
4-08	2 294	15179	3.9	586 3.3	505
5-08	2 311	16925	4.0	672 3.4	567

GRANDDAM: YELLOW BRIAR JANE

7927015C 2-04 85

Indies-View Farm

GARRETT SCHMIDT & JESS PETER

W14344 West Indies Road

Melrose, WI 54642

Garrett: (608) 865-0266 • Jess: (563) 380-9925

MILLER'S BURT CARLA

EXCELLENT-90



MILLER'S BURT CARLA

PUREBRED AYRSHIRE 09/07/08 FEMALE
 63970269 6-01 90 P9 +405
 NM\$ +110
 PTA +2.91SCC +1.8PFL +1.4DPR
 PTA -8M +5F +1P 41R
 PTA\$ +110CY 8/15
 PTA%
 PTAT +.03 +.01 44R 8/15
 PPA +1270M +81F +50P
 CLASS ST6 SR6 BD8 DF7 RA5 RW6 LS6 FA4
 FU5 UH7 UW8 UC7 UD4 TP4 TL6 LR6
 GOLD % FAT % PRT
 2-01 2 305 17690 4.0 709 3.3 586
 311 17950 4.0 719 3.3 595
 3-01 2 305 22030 4.3 943 3.4 745
 328 23010 4.3 986 3.4 781
 4-02 2 305 21000 4.0 841 3.4 704
 5-04 2 305 27820 3.9 1094 3.2 885
 364 31740 4.0 1259 3.2 1020

 2ND SR 3-YEAR-OLD, 2012 OH SPRING NAT'L

MILLER, JACK A.
 12261 PEMBERVILLE RD.
 BRADNER OH 43406
 419-288-2834

MILLER'S TRI-STAR BURT

63970243

MILLER'S MASTER CARLY

63970237 3-03 84

GOLD	%	FAT	%	PRT
2-00 2 305	18130 4.8	872 3.3	598	
	312 18420 4.8	886 3.3	609	
2-10 2 225	9200 4.2	383 3.6	333	
3-09 2 305	18050 3.9	704 3.1	564	
	354 19270 3.9	750 3.2	610	
4-11 2 275	16960 4.1	695 3.4	582	

GRANDDAM: MILLER'S REDSTONE COLLEAN

100316025 6-07 85

GOLD	%	FAT	%	PRT
2-01 2 305	19350 4.1	802 3.2	619	
	365 23180 4.1	946 3.2	741	
3-04 2 305	15810 3.2	500 3.2	502	
	334 16410 3.2	519 3.2	519	
5-02 2 305	27460 3.4	931 3.1	856	
	365 31620 3.4	1085 3.2	1001	
6-06 2 305	26590 3.3	886 3.1	828	
	336 27890 3.3	929 3.1	874	
7-07 2 304	20270 3.4	686 3.1	625	
LIFE	1923 132660 3.5	4605 3.2	4200	

Miller's Ayrshires

JACK & MICK MILLER

12261 Pemberville Rd.

Bradner, OH 43406

(419) 288-2834 • Mick: (419) 288-2210

LONE-ELM MODEM LADY

EXCELLENT-93



LONE-ELM MODEM LADY

PUREBRED AYRSHIRE		08/14/08 FEMALE	
100541506 6-06 93		P9 +466	
NM\$	+252		
PTA	+2.83SCC	+3.4PL	-0.3DPR
PTA	+208M	+20F	+15P 48R
PTA\$	+252CY		8/15
PTA%		+0.6	+0.4
PTAT	+0.70T		60R 8/15
PPA	+3224M	+150F	+121P
CLASS	ST9 SR8 BD7 DF8 RA5 RW7 LS5 FA4		
	FU8 UH7 UW9 UC5 UD5 TP7 TL7 LR7		
DHI		%	FAT % PRT
2-02	2 305 15340 4.1	626 3.3	500
	365 16560 4.1	677 3.3	543
3-04	2 305 21230 4.0	858 3.2	680
	365 24460 4.1	1008 3.3	798
4-08	2 305 20590 4.2	873 3.5	715
	365 23150 4.4	1009 3.5	814
5-10	2 283 19840 3.9	769 3.4	669
6-09	2 PROJ 21178 4.1	863 3.2	682

2ND 5-YEAR-OLD - 2013 MID-ATLANTIC NATIONAL
 2ND 5-YEAR-OLD - 2013 SOUTHERN NATIONAL
 NOM ALL-AMERICAN 5-YEAR-OLD - 2013
 1ST AGED COW - 2014 MID-ATLANTIC NATIONAL
 1ST AGED COW - 2014 SOUTHERN NATIONAL
 SENIOR CHAMPION - 2014 SOUTHERN NATIONAL
 GRAND CHAMPION - 2014 SOUTHERN NATIONAL
 HM ALL-AMERICAN AGED COW - 2014
 RES GRAND CHAMPION, 2015 TROY CO FAIR
 2ND AGED COW, 2015 MID-ATLANTIC NAT'L

LAGACE MODEM-ET

8389304C			
PTA	+2.68SCC	+2.0PL	-2.5DPR
PTA	+125M	+20F	+12P 95R
PTA%		+0.8	+0.4
PTAT	+0.10T		93R 8/15
D/AV	19805M 3.9	777F 3.2	624P 8.4T

LONE-ELM I.M. L'IL-BIT

100330809		5-02 86	
DHI		%	FAT % PRT
2-00	2 305 14570 3.9	574 3.2	461
	333 15130 4.0	599 3.2	481
3-00	2 280 11830 3.8	447 3.2	382
3-11	2 292 16450 3.6	595 3.3	546
4-10	2 305 16390 4.1	672 3.5	568
	307 16440 4.1	674 3.5	570
5-09	2 289 12290 3.3	408 3.2	393
6-08	2 305 15400 3.4	523 3.3	507
	361 16940 3.4	581 3.3	560

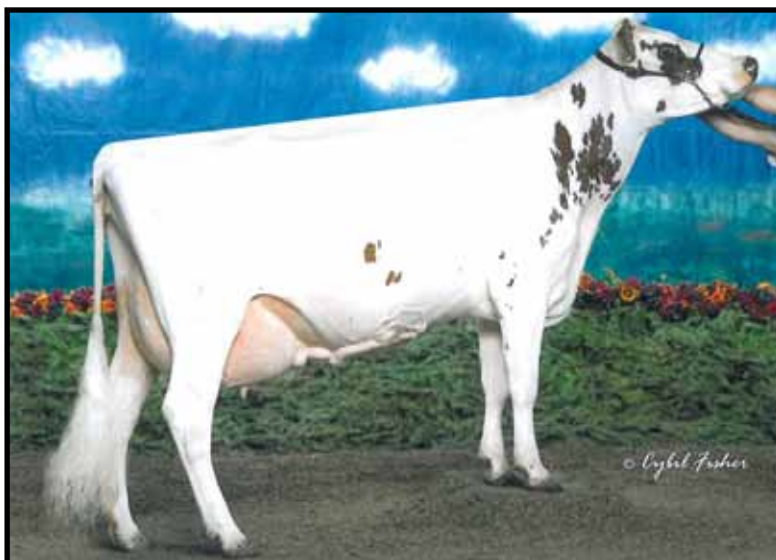
GRANDDAM: LONE-ELM SHAKER LONET

100281730		11-11 91		3E	
DHI		%	FAT %	PRT	
1-11	2 286 10450 4.3	448 3.1	320		
2-09	2 305 13750 4.3	592 3.3	459		
	310 13920 4.3	600 3.3	465		
3-09	2 305 14550 4.3	631 3.3	478		
	328 15100 4.4	658 3.3	497		
4-08	2 305 12180 4.2	513 3.3	404		
	308 12240 4.2	516 3.3	407		
5-08	2 305 15980 4.1	651 3.2	506		
	365 17780 4.1	729 3.2	569		
7-00	2 305 21610 3.8	817 3.1	676		
LIFE	3275 158020 4.1	6417 3.2	5016		

Lone-Elm Ayrshires
DAN, KIM, PAIGE & DANNY HOPPAUGH
 1301 Little York Rd.
 Columbia Cross Roads, PA 16914
 (570) 596-3008 • Cell (607) 731-2023

JEMS-AYRSHIRES B GARRET

PRIVATELY MARKETED BULL



JEMS-AYRSHIRES B GARRET

PUREBRED AYRSHIRE 06/04/11 MALE
100623576

P- +415

SEMEN AVAILABLE

PICTURED ABOVE IS THE DAM,
JEMS-AYRSHIRES TOF GOODY

PALMYRA TRI-STAR BURDETTE-ET

100419568

PTA	+2.80SCC	+1.4PL	+0.8DPR	
PTA	+429M	+14F	+18P	98R
PTA%		-.01	+.02	
PTAT	+1.80T		97R	8/15
D/AV	19799M 3.9	774F 3.2	628P	8.5T

JEMS-AYRSHIRES TOF GOODY

	100308824	11-08	93		3E			
GOLD			%	FAT	%	PRT		
2-05	2	305	14400	4.4	632	3.0	436	
		334	15490	4.4	689	3.1	473	
3-05	2	305	17620	5.3	935	3.0	532	
		323	18140	5.3	960	3.0	550	
4-05	2	305	21650	4.3	937	3.0	659	
		320	22340	4.4	972	3.1	686	
5-05	2	305	21720	4.6	996	3.0	662	
		330	22160	4.6	1017	3.1	679	
6-06	2	305	15350	4.2	641	3.1	479	
		343	15900	4.2	666	3.2	502	
7-08	2	305	14540	4.3	632	3.2	468	
		309	14640	4.4	637	3.2	471	
8-08	2	305	14560	4.1	597	3.1	454	
		LIFE	2929	136090	4.4	6021	3.1	4195

 NOM JR ALL-AMERICAN SR 2-YEAR-OLD - 2005
 INT CHAMP - 2006 MID-ATLANTIC NATIONAL JR
 GRAND CHAMPION - 2006 MID-ATLANTIC NAT'L JR
 NOM ALL-AMERICAN SR 3-YEAR-OLD - 2006
 RES JR ALL-AMERICAN SR 3-YEAR-OLD - 2006
 SR CHAMPION - 2007 MID-ATLANTIC NATIONAL JR
 RES GRAND - 2007 MID-ATLANTIC NATIONAL JR
 HM JR ALL-AMERICAN 4-YEAR-OLD - 2007
 NOM ALL-AMERICAN 5-YEAR-OLD - 2008

Hidden Valley Ayrshires

ROY COALE & JENNIFER ZINN

406 Bobcat Rd.

Newville, PA 17241

Roy: (717) 309-7022 • Jennifer: (717) 360-3058

Email: littleredcows@aol.com

SUNNY-ACRES BURDETTE KODIAK-ET

PRIVATELY MARKETED BULL



SUNNY-ACRES BURDETTE KODIAK-ET

PUREBRED AYRSHIRE 09/21/12 MALE
 100653401
 PTA +2.95SCC +0.9PL +1.6DPR
 PTA -425M -14F -5P 47R
 PTA% +.01 +.05
 PTAT +1.40T 46R 8/15

SEMEN AVAILABLE

PICTURED ABOVE IS THE DAM, STILLMORE
 BBBK KLASSY

GRANDDAM: STILLMORE SAVAGE KITTEN

100118980
 DHIR % FAT % PRT
 6-03 2 305 31698 4.4 1406 3.1 980
 333 33958 4.4 1511 3.1 1049

 NOM ALL-AMERICAN FALL HEIFER CALF - 2000

PALMYRA TRI-STAR BURDETTE-ET

100419568
 PTA +2.80SCC +1.4PL +0.8DPR
 PTA +429M +14F +18P 98R
 PTA% -.01 +.02
 PTAT +1.80T 97R 8/15
 D/AV 19799M 3.9 774F 3.2 628P 8.5T

STILLMORE BBBK KLASSY

100326965 5-10 94 2E
 GOLD % FAT % PRT
 2-10 2 293 17250 4.1 707 3.6 629
 3-09 2 280 18470 4.0 733 3.5 647
 4-09 2 305 19250 3.9 755 3.3 638
 315 19530 3.9 767 3.3 649
 5-09 2 305 21230 4.1 860 3.3 704
 310 21430 4.1 870 3.3 712
 6-09 2 305 24920 3.7 930 3.5 866
 365 28550 3.8 1078 3.5 1001
 10-05 2 260 13340 4.1 549 3.5 462
 LIFE 2011 127200 4.0 5031 3.5 4406

 RES ALL-AMERICAN FALL CALF - 2004
 RES ALL-AMERICAN FALL YEARLING - 2005
 HM ALL-AMERICAN SR 2-YEAR-OLD - 2006
 RES INT CHAMP - 2007 MID-ATLANTIC NATIONAL
 RES INT CHAMPION - 2007 CENTRAL NATIONAL
 RES INT CHAMPION - 2007 SOUTHERN NATIONAL
 RES ALL-AMERICAN SR 3-YEAR-OLD - 2007
 NOM ALL-AMERICAN 5-YEAR-OLD - 2009
 SENIOR CHAMPION - 2010 MID-ATLANTIC NATIONAL
 GRAND CHAMPION - 2010 MID-ATLANTIC NATIONAL
 RES ALL-AMERICAN AGED COW - 2010

Hidden Valley Ayrshires

ROY COALE & JENNIFER ZINN

406 Bobcat Rd.

Newville, PA 17241

Roy: (717) 309-7022 • Jennifer: (717) 360-3058

Email: littleredcows@aol.com

MAPLE-DELL BURDETTE DEMPSEY-ET

14AY33



MAPLE-DELL BURDETTE DEMPSEY-ET

PUREBRED AYRSHIRE 03/10/12 MALE
65302787

P8 +487

PTA	+2.76SCC	+1.8BPL	+0.6DPR	
PTA	-11M	+13F	+13P	47R
PTA%		+0.08	+0.07	
PTAT	+1.70T		47R	8/15

PALMYRA TRI-STAR BURDETTE-ET

100419568

PTA	+2.80SCC	+1.4PL	+0.8DPR	
PTA	+429M	+14F	+18P	98R
PTA%		-.01	+0.02	
PTAT	+1.80T		97R	8/15
D/AV	19799M 3.9	774F 3.2	628P	8.5T

MAPLE-DELL TRIDENT DEE-ET

100510791 7-04 93 3E

GOLD		%	FAT	%	PRT
2-04	2 305	18060	4.7	850 3.5	637
		358	21010	4.7	984 3.6 749
3-05	2 305	24220	4.5	1084 3.3	802
		365	26890	4.5	1208 3.4 906

GRANDDAM: MAPLE-DELL ZORRO DAFOURTH

100257070 6-06 95 2E

GOLD		%	FAT	%	PRT
2-00	2 305	22380	4.3	958 3.3	737
3-00	2 305	21790	4.0	866 3.1	676
		310	22000	4.0	871 3.1 682
4-00	2 305	23150	4.7	1080 3.3	762
		365	26200	4.6	1203 3.3 864
6-01	2 305	26150	4.6	1197 3.0	784
		365	30950	4.5	1387 3.0 939
7-11	2 305	23770	4.4	1044 3.0	707
		365	27930	4.3	1193 3.0 838
9-06	2 305	23220	4.7	1098 2.9	668
		LIFE 2287	165180	4.4	7191 3.1 5148

NOM ALL-AMERICAN FALL CALF - 2008
NOM JR ALL-AMERICAN FALL CALF - 2008
NOM ALL-AMERICAN FALL YEARLING - 2009
HM JR ALL-AMERICAN FALL YEARLING - 2009
NOM ALL-AMERICAN SR 2-YEAR-OLD - 2010
HM JR ALL-AMERICAN SR 2-YEAR-OLD - 2010
RES INT CHAMP - 2011 MID-ATLANTIC NAT'L JR
NOM ALL-AMERICAN SR 3-YEAR-OLD - 2011
NOM JR ALL-AMERICAN SR 3-YEAR-OLD - 2011
SR CHAMPION - 2012 MID-ATLANTIC NATIONAL JR

NOM ALL-AMERICAN JR 2-YEAR-OLD - 2004
INT CHAMPION - 2005 MID-ATLANTIC NATIONAL
RES ALL-AMERICAN JR 3-YEAR-OLD - 2005
GRAND CHAMPION - 2006 MID-ATLANTIC NATIONAL
RES GRAND CHAMPION - 2006 CENTRAL NATIONAL
RES ALL-AMERICAN 4-YEAR-OLD - 2006



ACCELERATED GENETICS

1-800-451-9275

www.accelgen.com

For Procurement, Contact:

Jess Peter

(563) 380-9925 | jpeter@accelgen.com

HAWKSFIELD JAMISON P TF

14AY37



HAWKSFIELD JAMISON P TF

PUREBRED AYRSHIRE 09/02/13 MALE
100674161

			P-	+415
PTA	+2.85SCC	+0.1PL	+1.1DPR	
PTA	-25M	-7F	-3P	43R
PTA%		-.03	-.02	
PTAT	+.90T		41R	8/15

PALMYRA TRI-STAR BURDETTE-ET

100419568
PTA +2.80SCC +1.4PL +0.8DPR
PTA +429M +14F +18P 98R
PTA% -.01 +.02
PTAT +1.80T 97R 8/15
D/AV 19799M 3.9 774F 3.2 628P 8.5T

ELITE-HAWK JESSAMINE P-ET

100511907 5-10 92 2E

DHI	%	FAT	%	PRT
3-01 2 305	13318 3.4	449 3.0		404
	365 15364 3.5	544 3.1		478
4-05 305	15675 3.3	515 3.0		468
	330 15945 3.3	527 3.0		478
5-08 305	20455 3.1	627 2.9		596
	365 23616 3.2	756 2.9		683
6-11 305	27992 3.6	979 3.2		906
	365 32409 3.6	1152 3.2		1043

GRANDDAM: BONNIE BRAE JEMINA

100146073 8-04 91

DHI	%	FAT	%	PRT
2-11 2 305	18386 4.2	769 3.0		556
	337 19729 4.2	826 3.1		603
4-04 2 305	17670 4.1	733 3.0		529
	365 20249 4.1	829 3.0		616
5-10 2 305	18350 4.2	778 3.0		548
7-01 2 305	15780 4.3	680 3.0		479
	343 16350 4.3	698 3.0		498
8-03 2 305	25820 4.2	1076 2.9		753
9-07 3 305	20610 4.1	855 2.9		600



ACCELERATED GENETICS

1-800-451-9275

www.accelgen.com

For Procurement, Contact:

Jess Peter

(563) 380-9925 | jpeter@accelgen.com



A member of the U.S. Livestock Genetics Export
1224 Alton Darby Creek Road, Suite B
Columbus, Ohio 43228
(614) 335-0020 | (614) 335-0023 Fax | info@usayrshire.com

www.USAYrshire.com

